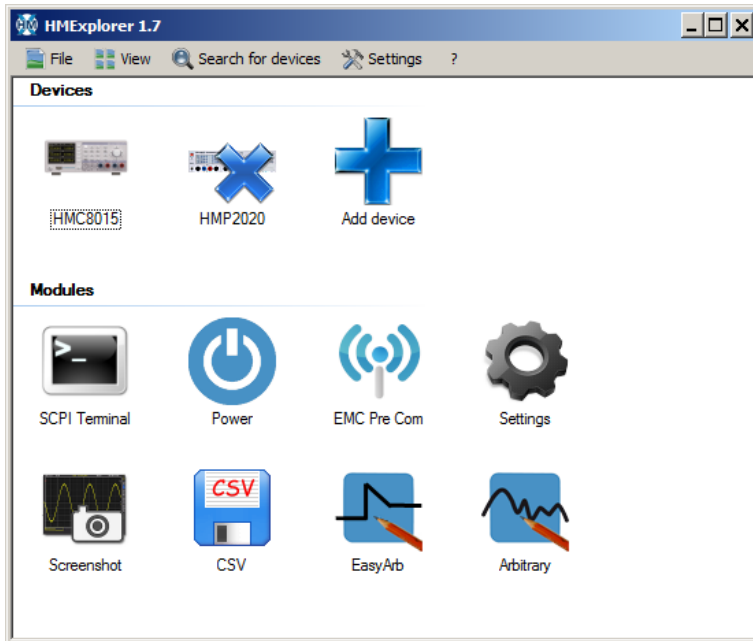


# R&S®HMEexplorer

## Release Notes

### Software Version 1.7.9



© 2021 Rohde & Schwarz GmbH & Co. KG  
Muehldorfstr. 15, 81671 Munich, Germany  
Phone: +49 89 41 29 - 0  
Fax: +49 89 41 29 12 - 164  
E-mail: <mailto:info@rohde-schwarz.com>  
Internet: <http://www.rohde-schwarz.com>

Subject to change

R&S® is a registered trademark of Rohde & Schwarz GmbH & Co. KG. Trade names are trademarks of the owners.

3622.6187.01 | Version 03 | R&S®HMEexplorer

The software makes use of several valuable open source software packages. For information, see the "Open Source Acknowledgment" provided with the product.

The following abbreviations are used throughout this document: R&S®HMEexplorer is abbreviated as R&S HMEexplorer.

PAD-TM: 3574-3288-02/03.00/C/1/EN

# Contents

<b>1</b>	<b>Information on the Current Version and History</b> .....	<b>3</b>
1.1	Software Version 1.7.9 .....	3
1.2	Software Version 1.7.8 .....	3
1.3	Software Version 1.7.7 .....	3
1.4	Software Version 1.7.4 .....	4
1.5	Software Version 1.7.0 .....	4
1.6	Software Version 1.6.9 .....	4
<b>2</b>	<b>Software Update</b> .....	<b>5</b>
<b>3</b>	<b>Customer Support</b> .....	<b>6</b>

# 1 Information on the Current Version and History

## 1.1 Software Version 1.7.9

Changes to software version 1.7.9

Version	Improvements
1.7.9	Add NGUx01 and NGA1xx devices support

Version	Know Issues
1.7.0	Possibility of data errors in transfer for high data rates of binary data via USB for NGM, NGL, NGP

## 1.2 Software Version 1.7.8

Changes to software version 1.7.8

Version	Improvements
1.7.8	EasyArb change time resolution to 1ms change max duration for NGM/L to 10h

Version	Know Issues
1.7.0	Possibility of data errors in transfer for high data rates of binary data via USB for NGM, NGL, NGP

## 1.3 Software Version 1.7.7

Changes to software version 1.7.4

Version	Improvements
1.7.7	New devices: NGL, NGM, NGP Series

Version	Know Issues
1.7.0	Possibility of data errors in transfer for high data rates of binary data via USB for NGM, NGL, NGP

## 1.4 Software Version 1.7.4

Changes to software version 1.7.0

### Improvements

Version	Improvements
1.7.4	New devices: NGE10x
1.7.4	Emc precompliance report string fixed
1.7.4	Options for HMC8015 added

## 1.5 Software Version 1.7.0

Changes to software version 1.6.9:

### Improvements

Version	Improvements
1.7.0	NI-GPIB 488.2: updated to version 3.1.2
1.7.0	Transfer of large arbitrary waveforms via GPIB interface improved
1.7.0	General improvements

## 1.6 Software Version 1.6.9

Changes to software version 1.5.1

### Improvements

Version	Improvements
1.6.9	R&S HMC8015 supported
1.6.9	R&S HMC8015 Power Software Module
1.6.9	R&S HMO1202 supported
1.6.9	[Terminal]: Manual timestamp format adjustment (12h/24h)
1.6.9	General improvements

## 2 Software Update

R&S HMEplorer PC software updates are available as download from the Rohde & Schwarz web page <http://www.rohde-schwarz.com>.

The installation file for R&S HMEplorer is named HMEplorer\_1\_7\_9.msi.

Before HMEplorer PC software update to actual version please uninstall the older software version and reinstall the actual version.

## 3 Customer Support

### Technical support – where and when you need it

For quick, expert help with any Rohde & Schwarz equipment, contact one of our Customer Support Centers. A team of highly qualified engineers provides telephone support and will work with you to find a solution to your query on any aspect of the operation, programming or applications of Rohde & Schwarz equipment.

### Up-to-date information and upgrades

To keep your instrument up-to-date and to be informed about new application notes related to your instrument, please send an e-mail to the Customer Support Center stating your instrument and your wish. We will take care that you will get the right information.

#### Europe, Africa, Middle East

Phone +49 89 4129 12345

[customersupport@rohde-schwarz.com](mailto:customersupport@rohde-schwarz.com)

#### North America

Phone 1-888-TEST-RSA (1-888-837-8772)

[customer.support@rsa.rohde-schwarz.com](mailto:customer.support@rsa.rohde-schwarz.com)

#### Latin America

Phone +1-410-910-7988

[customersupport.la@rohde-schwarz.com](mailto:customersupport.la@rohde-schwarz.com)

#### Asia/Pacific

Phone +65 65 13 04 88

[customersupport.asia@rohde-schwarz.com](mailto:customersupport.asia@rohde-schwarz.com)

#### China

Phone +86-800-810-8828 / +86-400-650-5896

[customersupport.china@rohde-schwarz.com](mailto:customersupport.china@rohde-schwarz.com)