

R&S®FSMR NRP Update

Release Notes

These Release Notes are for following models of the R&S®FSMR Measuring Receiver:

R&S® FSMR3, order no. 1313.9200K03

R&S® FSMR26, order no. 1313.9200K26

R&S® FSMR43, order no. 1313.9200K43

R&S® FSMR50, order no. 1313.9200K50

© 2017 Rohde & Schwarz GmbH & Co. KG

Muehldorfstr. 15, 81671 Munich, Germany

Phone: +49 89 41 29 - 0

Fax: +49 89 41 29 12 164

E-mail: <mailto:info@rohde-schwarz.com>

Internet: <http://www.rohde-schwarz.com>

Subject to change.

R&S® is a registered trademark of Rohde & Schwarz GmbH &

Co. KG.

Trade names are trademarks of the owners.

1 Installation Package NRP Update

The Power Sensors R&S NRPxxS/SN, R&S NRPxxT/TN and R&S NRPxxA/AN are not supported by the actual firmware 4.76 of FSMR.

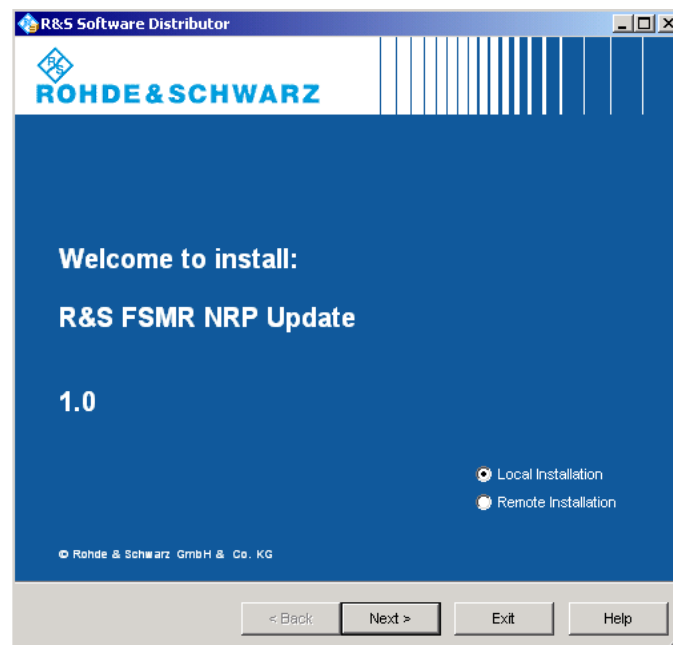
To make these sensors available, you need to execute the installation package "NRP_Update_1.0.exe". The file can be placed on any disk drive or USB storage device attached to the instrument.

Prerequisite: Operating system Windows Embedded Standard SP 3
Firmware revision 4.76

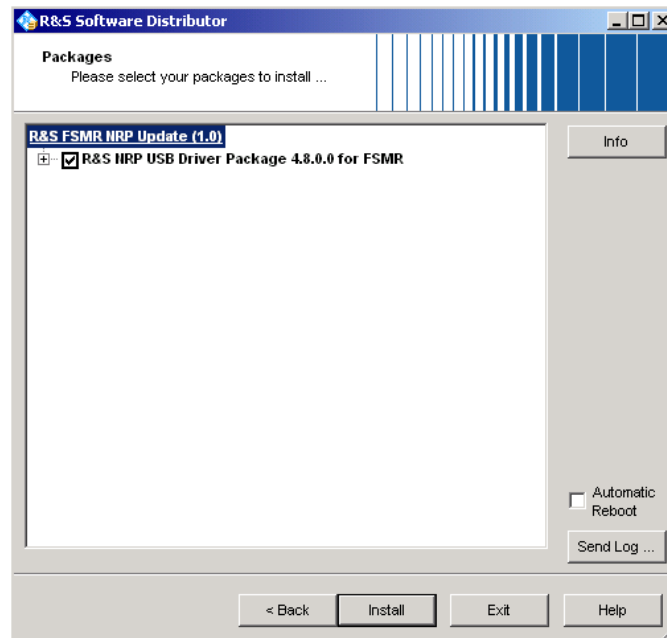
The update process is performed by the following steps:

1. Disconnect all sensors before the installation is started.
2. Connect a keyboard to the FSMR.
3. Stop the application with ALT-F4.
4. Ensure, that the ApplicationManager stopped working.
5. Start the installation by double clicking the File " NRP_Update_1.0.exe ".

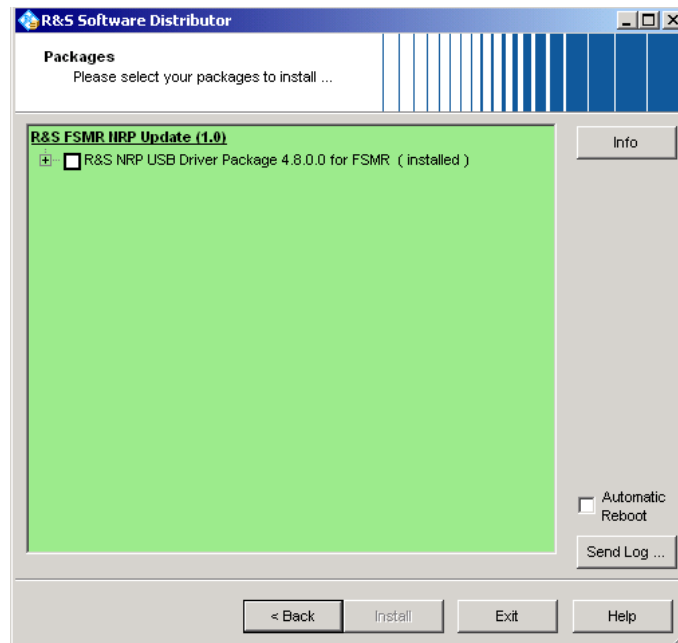
Following dialog appears:



- Press "Next".
Following dialog appears:



- Press "Install" to start the installation.
A black console window will show up. Please be patient until the installation process is complete.
- After the installation process has completed, the following dialog is shown on the screen:



- Press "Exit" and restart the FSMR.

2 Customer Support

Technical support – where and when you need it

For quick, expert help with any Rohde & Schwarz equipment, contact one of our Customer Support Centers. A team of highly qualified engineers provides telephone support and will work with you to find a solution to your query on any aspect of the operation, programming or applications of Rohde & Schwarz equipment.

Up-to-date information and upgrades

To keep your instrument up-to-date and to be informed about new application notes related to your instrument, please send an e-mail to the Customer Support Center stating your instrument and your wish. We will take care that you will get the right information.

Europe, Africa, Middle East

Phone +49 89 4129 12345

customersupport@rohde-schwarz.com

North America

Phone 1-888-TEST-RSA (1-888-837-8772)

customer.support@rsa.rohde-schwarz.com

Latin America

Phone +1-410-910-7988

customersupport.la@rohde-schwarz.com

Asia/Pacific

Phone +65 65 13 04 88

customersupport.asia@rohde-schwarz.com

China

Phone +86-800-810-8828 / +86-400-650-5896

customersupport.china@rohde-schwarz.com