

# R&S® Broadcast Drive Test

## Release Notes

### Software Version 03.20

© 2018 Rohde & Schwarz GmbH & Co. KG  
Muehldorfstr. 15, 81671 Munich, Germany  
Phone: +49 89 41 29 - 0  
Fax: +49 89 41 29 12 164  
E-mail: <mailto:info@rohde-schwarz.com>  
Internet: <http://www.rohde-schwarz.com>

Subject to change

R&S® is a registered trademark of Rohde & Schwarz GmbH & Co. KG. Trade names are trademarks of the owners.

The following abbreviations are used throughout this document: R&S®XYZ is abbreviated as R&S XYZ.

# Table of Contents

<b>1</b>	<b>Information on the Current Version and History</b> .....	<b>3</b>
1.1	Version 03.20.....	3
1.2	Version 03.13.....	3
1.3	Version 03.12.....	3
1.4	Version 03.10.....	3
1.5	Version 03.00.....	4
1.6	Version 02.00.....	5
1.7	Version 01.00.....	6
<b>2</b>	<b>Modifications to the Documentation</b> .....	<b>7</b>
<b>3</b>	<b>Installation and Update</b> .....	<b>8</b>
3.1	System Requirements .....	8
3.2	Installing the Software .....	8
3.3	Uninstalling the Software.....	9
3.4	Updating the Software.....	9
<b>4</b>	<b>Customer Support</b> .....	<b>10</b>

# 1 Information on the Current Version and History

## 1.1 Version 03.20

Released: July 2018

### New Functionality

- R&S ETL: K370 DTMB (Chinese terrestrial) measurements supported

## 1.2 Version 03.13

Released: October 2015

Documentation updated.

## 1.3 Version 03.12

Released: April 2013

### Fixed Issues

- Possibly too many attenuation adaption related invalid measurements, if one analyzer handled more than one signal
- R&S ETL: Preamplifier configuration error if drive test started with a very high input level (>-33 dBm)
- R&S ETC, R&S ETH: Some certain analyzer configurations could cause invalid echo pattern measurements
- KMZ export: The KMZ output file was not written to the user defined directory, but the application directory instead, if multiple drive test result input files had been selected

### Known Issues

- Drive test result .(dtr) files created by software version 3.12 cause software version 1.00 to crash on access.  
=> Replace all software versions 1.00 by version 3.12

## 1.4 Version 03.10

Released: February 2013

**New Functionality**

- R&S ETL: Support of R&S TSMX-PPS2 GPS receiver
- R&S ETL: New measurement mode with less attenuation adaption, if no direct adjacent channels are present
- KMZ export: Multiple drive test result (.dtr) input files with same RF standard and frequency can be combined into a single KMZ output file
- KMZ export: Added two new spot indicators to also represent average or best values occurred within an area apart from the default indicator for the worst value
- KMZ export: Selection of measurements, colors, indicators and maximum zoom resolution for the output file
- KMZ export: Possibility to change level unit and to assign a manual k-factor or level offset
- CSV export: Multiple input files can be selected even with different RF standards or frequencies

**Modified Functionality**

- KMZ export: Runs 10 times faster

**Fixed Issues**

- R&S ETL: Preamplicifier was never used if drive test started with a very high input level (>-33 dBm)
- KMZ/CSV export: K-factor was not always taken into account for field strength results
- CSV export: Value precision exceeded measurement precision

**Known Issues**

- Drive test result (.dtr) files created by software version 3.10 cause software version 1.00 to crash on access.  
=> Replace all software versions 1.00 by version 3.10

## 1.5 Version 03.00

Released: November 2012

**New Functionality**

- R&S ETC Compact TV Analyzer supported (DVB-T, ISDB-T & DVB-T2)
- R&S ETL: ATSC Mobile DTV measurements supported
- R&S ETL: DVB-T2 MISO echo pattern measurement supported
- R&S ETL: Partial ISDB-T layer reception supported
- R&S ETL: DAB / T-DMB C/N measurement supported
- R&S ETL: ATSC 'FEC Sync required' setting supported
- R&S ETL: BCDRIVE can be launched using the MODE key
- All measurements in a KMZ file are available in all three spot sizes
- Support of different color profiles for KMZ files
- Interpolation of missing GPS coordinates (e.g. in tunnels) for KMZ files
- Level, sync & GPS status update also during stopped or paused drive test

**Modified Functionality**

- The 32 bit edition now also runs on 64 bit operating systems. Thus the 64 bit edition 'R&S Broadcast Drive Test 64' is no longer needed and therefore discontinued (see chapter 3.4)
- R&S ETL, R&S ETC: Improved precision of GPS speed measurement
- R&S ETL does not support 10 MHz channel bandwidth for DVB-T2
- Improved file selection for export of drive test result files
- Faster KMZ file export
- Improved drag & drop behavior for the signal selection view
- During drive test: Display of remaining memory instead of maximum speed
- Improved remote control efficiency

**Fixed Issues**

- R&S ETL: Possibly absolute instead of relative levels in DVB-T2 echo pattern
- R&S ETL: Possible freeze or timeout of GPS configuration dialog
- R&S ETH: Possibly wrong indication of supported mobile measurements
- R&S ETH: Did not initialize correctly when running in certain spectrum modes
- On some systems, connected TV analyzers could not be detected
- Possible timeouts when scanning multiple frequencies with high level offset
- Possible wrong analyzer initialization, if different analyzer types were detected
- Although the speed unit was set to [mph], export was still done in [km/h]
- On some systems, dialog fonts were displayed in the wrong size
- Some message boxes caused a high CPU load
- .csv export files lacked a carriage return character before the line feed character

**Known Issues**

- Drive test result (.dtr) files created by software version 3.00 cause software version 1.00 to crash on access.  
=> Replace all software versions 1.00 by version 3.00

## 1.6 Version 02.00

Released: December 2011

**New Functionality**

- R&S ETH Handheld TV Analyzer supported (DVB-T & ISDB-T)
- R&S ETL: Mobile measurements and Multi-PLP supported for DVB-T2
- R&S ETL: Stationary measurements supported for analog TV standards
- R&S ETL: Sync measurement for FM stereo standards
- R&S ETL-B310 option supported for DVB-T2
- GPS configuration for R&S ETL or R&S ETH

**Modified Functionality**

- Exported KMZ files are processed significantly faster by Google Earth and require 60% less disk space

**Fixed Issues**

- TV analyzer IP addresses ending on '.235' or higher were not handled properly
- Incorrect handling when more than five TV analyzers were detected
- Erroneous share indication for parameter results within .kmz files
- R&S BCDRIVE did not execute on 64 bit operating systems

**Known Issues**

- Drive test result .(dtr) files created by software version 2.00 cause software version 1.00 to crash on access.  
=> Replace all software versions 1.00 by version 2.00

## 1.7 Version 01.00

Initial release: July 2011

## 2 Modifications to the Documentation

The current documentation is up-to-date.

## 3 Installation and Update

Your Broadcast Drive Test software as well as updates are provided:

- On the Rohde & Schwarz Home Page  
<https://www.rohde-schwarz.com/software/bcdrive/>
- By Rohde & Schwarz service centers or sales offices.

### 3.1 System Requirements

The R&S Broadcast Drive Test software can be installed on an R&S ETL or a computer.

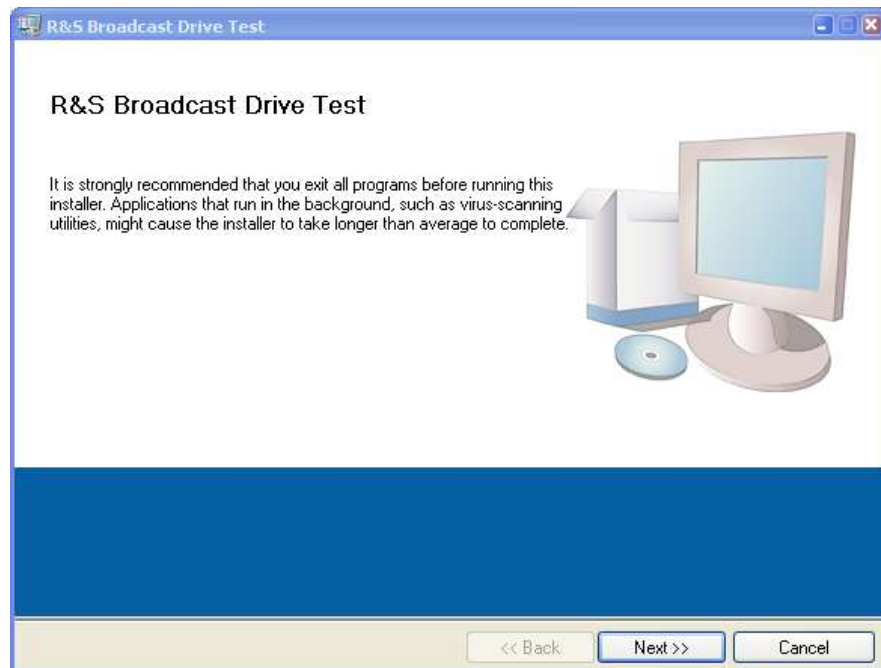
#### Computer

- Windows® XP SP2 / Vista / 7 / 8 operating system (32 bit / 64 bit)
- Administrator rights (for installation)
- Pentium® processor or equivalent at 600 MHz or higher
- 512 Mbyte free memory space
- 20 Mbyte free hard disk space,  
plus a minimum of 500 Mbyte for recording (USB drive can also be used)
- Minimum screen resolution VGA (640 x 480), 256 colors
- Ethernet connection for remote control via LAN  
Mandatory for use with R&S ETH or R&S ETC  
In case of use with R&S ETL, the Ethernet connection is required if not executed on the R&S ETL itself or to control additional R&S ETLs

### 3.2 Installing the Software

1. If the installer is delivered as a \*.zip archive, extract the contents.
2. Copy the R&S Broadcast Drive Test software installer files to any drive that is accessible for your R&S ETL or computer (e.g. local drive, network drive or connected memory stick).
3. Double-click the "setup.exe" file. The setup dialog box is displayed.





4. Click "Next >>" to accept the default target directories.
5. Click " Next >>" to begin the installation.  
The installation process is started.
6. Follow the instructions of the Setup Wizard.

### 3.3 Uninstalling the Software

To uninstall the R&S Broadcast Drive Test software, perform the following procedure:

1. In the "Start" menu, select "Control Panel", then "Software", then "Add or Remove Programs".
2. Select "R&S Broadcast Drive Test Test".
3. Click "Remove".

### 3.4 Updating the Software

Your personal settings are preserved.

1. In case of an existing 64 bit edition ('R&S Broadcast Drive Test 64'), uninstall this software manually beforehand.
2. Install the new software version as described under "[Installing the Software](#)".

If there is already an older version of the 32 bit edition installed, it will be uninstalled automatically.

## 4 Customer Support

### Technical support – where and when you need it

For quick, expert help with any Rohde & Schwarz equipment, contact one of our Customer Support Centers. A team of highly qualified engineers provides telephone support and will work with you to find a solution to your query on any aspect of the operation, programming or applications of Rohde & Schwarz equipment.

### Up-to-date information and upgrades

To keep your instrument up-to-date and to be informed about new application notes related to your instrument, please send an e-mail to the Customer Support Center stating your instrument and your wish. We will take care that you will get the right information.

#### Europe, Africa, Middle East

Phone +49 89 4129 12345

[customersupport@rohde-schwarz.com](mailto:customersupport@rohde-schwarz.com)

#### North America

Phone 1-888-TEST-RSA (1-888-837-8772)

[customer.support@rsa.rohde-schwarz.com](mailto:customer.support@rsa.rohde-schwarz.com)

#### Latin America

Phone +1-410-910-7988

[customersupport.la@rohde-schwarz.com](mailto:customersupport.la@rohde-schwarz.com)

#### Asia/Pacific

Phone +65 65 13 04 88

[customersupport.asia@rohde-schwarz.com](mailto:customersupport.asia@rohde-schwarz.com)

#### China

Phone +86-800-810-8828 / +86-400-650-5896

[customersupport.china@rohde-schwarz.com](mailto:customersupport.china@rohde-schwarz.com)