

R&S® NRP-Toolkit

Release Notes Version 4.20

© 2009 – 2020 Rohde & Schwarz GmbH & Co. KG

81671 Munich, Germany

Printed in Germany – Subject to change – Data without tolerance limits is not binding.

R&S® is a registered trademark of Rohde & Schwarz GmbH & Co. KG.

Trade names are trademarks of the owners.

Table of Contents

Table of Contents	2
1 General information	4
2 Information on the Current Version and History	6
2.1 Version 4.20	6
2.2 Version 4.17	6
2.3 Version 4.16	6
2.4 Version 4.15	7
2.5 Version 4.14	7
2.6 Version 4.13	7
2.7 Version 4.12	8
2.8 Version 4.11	8
2.9 Version 4.10	8
2.10 Version 4.9	8
2.11 Version 4.8	8
2.12 Version 4.7	9
2.13 Version 4.6	9
2.14 Version 4.5	9
2.15 Version 4.4	10
2.16 Version 4.3	10
2.17 Version 4.2.0	10
2.18 Version 4.1.0	11
2.19 Version 4.0.0	11
2.20 Version 3.1.0	11
2.21 Version 2.3.1	12
2.22 Version 2.2.0	12
2.23 Version 2.1.19	12
2.24 Version 2.1.18	12
2.25 Version 2.1.17	13
2.26 Version 2.1.16	13
2.27 Version 2.1.15	13
2.28 Version 2.1.14	13
2.29 Version 2.1.12	13
2.30 Version 2.1.10	14
2.31 Version 2.1.6	14

3	Power Viewer Plus	15
3.1	<i>Version 7.1 (and higher)</i>	15
3.2	<i>Version 7.0</i>	15
3.3	<i>Version 6.4</i>	15
3.4	<i>Version 6.1</i>	16
3.5	<i>Version 5.9</i>	16
3.6	<i>Version 5.6</i>	17
3.7	<i>Version 5.5</i>	17
3.8	<i>Version 5.4</i>	17
3.9	<i>Version 5.3</i>	17
3.10	<i>Version 5.0</i>	18
3.11	<i>Version 4.1</i>	19
3.12	<i>Version 4.0</i>	19
3.13	<i>Version 3.3</i>	20
3.14	<i>Version 3.2</i>	21
3.15	<i>Version 3.1</i>	21
3.16	<i>Version 3.0</i>	22
3.17	<i>Version 2.3</i>	22
3.18	<i>Version 2.2 / 2.1</i>	23
3.19	<i>Version 2.0</i>	23
4	Installation	25
4.1	<i>Prerequisites</i>	25
4.2	<i>Execution of the Installer program</i>	25
4.3	<i>Update Procedure</i>	27
5	Open Source Acknowledgement	28
5.1	<i>GNU LESSER GENERAL PUBLIC LICENSE</i>	28
6	Customer Support	34

1 General information

This package contains the R&S® NRP-Toolkit software. This software is designed to work with all R&S®NRP® USB power sensors as well as the frequency selective power sensor NRQ6.

The R&S®NRP-Toolkit contains the following components:

- Windows USB kernel-mode driver (WHQL certified) for NRP Power Sensors
- Windows USB “userland” interface driver (NrpControl2.dll)
- Tool for assigning network parameters of Network Sensors via a (temporary) USB connection (NrpNetSet). This tool also displays Zeroconf TCP/IP address assignments
- Firmware Update Tool (PureFW)
- Tool to determine the extended measurement uncertainty of NRP Power Sensors (NrpUncertaintyCalc.exe)
- Terminal Tool for NRP USB Sensors (NrpTerm2)
- S-Parameter Update Tool (to load/save S2P files to/from sensor)
- Tool to display version information of installed NRP products related software (NrpVersionCollector)

The supplied drivers fully support both 32-bit and 64-bit PC architectures.

Additionally there are separate packages available for users/programmers who are to be integrating the R&S®NRP® USB power sensors in their own applications. For this group of persons, the so called VXI Plug&Play driver package is available. For the sake of simplicity, the NRP-Toolkit installer V4.4 (and higher) comes with this driver by default and installs it right after the installation of the lower driver layers.

Optionally the NRP-Toolkit installer offers the installation of a so called SDK (Software Development Kit) which puts source code and link libraries for a couple of demo programs to a common directory (C:\ProgramData\Rohde-Schwarz\NRP-Toolkit-SDK)

- 32-bit & 64-bit link libraries (rsnrpz_32.lib, rsnrpz_64.lib)
- Header files for development of own applications
- Demo applications
(source code in various languages [C, C#, C++, Python, ...])

An interactive application supporting multiple simultaneously used sensors can also be downloaded from the R&S® website

- Virtual Power Meter (NRPV [supporting multiple sensors/channels])

Note: This brochure describes the usage of the power sensors under Windows desktop operating systems. There are separate driver packages available for 32-bit and 64-bit Linux operating systems. These packages come as installable *.deb or *.rpm packages for popular Linux distributions. Besides this a MacOSX package is

available and we also support Windows CE. Furthermore most R&S® USB power sensors are useable with selected Android devices (Smartphones, Tablets, Phablets).

Please contact our support if you are interested in application areas other than Microsoft Windows®.

Note: The operation of the frequency selective power sensor NRQ6 requires an installed VISA on the controlling host. This is not part of the present NRP-Toolkit. If a VISA is not yet installed on your PC, please refer to

https://www.rohde-schwarz.com/de/applikationen/r-s-visa-application-note_56280-148812.html

for downloading the R&S VISA installer free of charge.

2 Information on the Current Version and History

Hint: If you are searching the free user application **Power Viewer** (formerly known as **Power Viewer Plus**) you can download it separately from the Rohde & Schwarz website. Power Viewer is not part of the NRP-Toolkit and is not required for operating the tools and applications, which come with the NRP-Toolkit.

2.1 Version 4.20

Released: August 2020

Functional improvements:

- New release of USB driver, including support for new 90 GHz thermal power sensors (NRP90T, NRP90TN) and NRP67SN-V TVAC (thermal vacuum) Three-path Diode Power Sensor

2.2 Version 4.17

Released: February 2020

Functional improvements:

- New release of WHQL Certified USB driver, including new waveguide power sensors
- Extended various tools to support new base unit NRX
- Extended the number of supported sensors from 32 to 63

Issues eliminated:

- NRQ sample programs from NRP-Toolkit-SDK now use the full SENS:BAND:RES command for resolution bandwidth setting. In previous NRQ firmware versions the :RES part was optional

2.3 Version 4.16

Released: September 2018

Functional improvements:

- Added Multicast-DNS Service Discovery (mDNS-SD) functionality to Network Sensor Configuration tool
- Display for Zeroconf network parameters

- Added an extensive guide for setup and troubleshooting of the Ethernet interface of Network Sensors

Issues eliminated:

Fixed possible deadlock under sustaining error condition of sensor (for example, by permanent 'permissible input power exceeded')

2.4 Version 4.15

Released: April 2018

Functional improvements:

- Added support for frequency selective power sensor NRQ6
- Added Python and C/C++ samples to NRP-Toolkit-SDK for demonstrating various NRQ6 measurement modes (located in `C:\ProgramData\Rohde-Schwarz\NRP-Toolkit-SDK\examples\NRQ\` after installation)

Issues eliminated:

- Fixed redundant warning in S-Parameter tool when using R&S VISA v5.8.4

2.5 Version 4.14

Released: February 2018

Functional improvements:

- Fixed installer to register OCX modules which are required by S-Parameter Multi application
- Fixed problem with auto-detection of CAL:USER:DATA after a sensor firmware change

2.6 Version 4.13

Released: November 2017

Functional improvements:

- Added a tool to set (TCP/IP) network-parameters of NRPxxXN sensors via USB port of the corresponding sensor
- Enhanced resource string evaluation; a trailing '`: : INSTR`' is now silently ignored
- Fixing sign propagation in 64-bit compilations for function which translates error-numbers into error-messages (= `rsnrpz_error_message()` in VXI Plug&Play driver)

2.7 Version 4.12

Released: September 2017

Functional improvements:

- Fixed NRP Uncertainty calculator (swapped temperature range of NRP110T)

2.8 Version 4.11

Released: June 2017

Functional improvements:

- Improved version of Firmware Update program 'PureFW'. The program now supports firmware update of new base devices

2.9 Version 4.10

Released: September 2016

Functional improvements:

- Improved MacOSX implementation
- Improved multi-thread capability of contained VXI Plug&Play driver 'rsnrpz' (all OSes)
- Fixed handling/re-usage of open sessions under LabView environment.

2.10 Version 4.9

Released: Juli 2016

Functional improvements:

- R&S internal release; added libraries again for 32-bit Windows XP from older NRP-Toolkit to support existing XP device installations. This is **not** included in the package which is released to the public.

2.11 Version 4.8

Released: June 2016

Functional improvements:

- Updated WHQL certification for actual USB driver and sensor models.

- Added support for NRPC18, NRPC33, NRPC40, NRPC50, NRPC67, NRPC18-B1, NRPC33-B1, NRPC40-B1, NRPC50-B1, NRPC67-B1, NRPM3, NRPM3N
- Added handling of binary data (read & write) to NrpTerm2
- All tools and user-land driver are compiled with Visual Studio 2015; including appropriate runtime libraries (vc14.0) in installer

2.12 Version 4.7

Released: December 2015

Functional improvements:

- Maintenance release. Improved handling of plug-/unplug events under Windows CE
- Added missing USB IDs of some special sensor models
- Windows 10 (32-/64-bit) now officially supported
- Dropped Windows XP support
- Fixed spurious race-condition in (separately available) R&S NRP Visa Passport driver
- Added function to retrieve overview of sensors attached to different applications in multi-application szenarios (usage map)
- Mentioned the existence of the Uncertainty Calculator also in the release notes

2.13 Version 4.6

Released: September 2015

Functional improvements:

- Maintenance release. Implementation of multi-application functionality in other high-level drivers and various sample programs

2.14 Version 4.5

Released: August 2015

Functional improvements:

- Made low-level driver capable of being used in multiple applications simultaneously. Introduced a new status information (NRP_ERROR_SENSOR_IN_USE) for synchronizing multiple instances
- Enhanced upper driver layers in order to take 'sensor-is-in-use' status into account
- Improved various applications and sample programs to take 'sensor-is-in-use' status into account
- Fixed NRP VISA Passport driver (available as a separately downloadable package)

- Separated Power Viewer Plus from NRP-Toolkit. Power Viewer Plus V7.1 and higher comes in a separately installable package now
- Added more sample programs to the NRP-Toolkit-SDK (including samples for using power sensors with VISA and NRP VISA Passport under C/C++ and C#)

2.15 Version 4.4

Released: June 2015

Functional improvements:

- Added latest kernel-mode device drivers for new R&S® NRP USB devices (WHQL certified)
- VXI Plug&Play driver no longer is an optional component; it is installed always now
- Improved NrpVersionCollector application which displays versions of installed software packages
- Fixed uninstaller issues

2.16 Version 4.3

Released: May 2015

Functional improvements:

- New installer structure. Single installer for 32-bit & 64-bit drivers and optional SDK (Software Development Kit) with programming examples
- Installer option for deploying IVI Shared Component containing USBTMC driver (necessary for NRPxxS/NRPxxSN series power sensors)
- Improved firmware-update tool (PureFW) supporting Zero-Conf sensor connections
- Fixed rendering issues of WebGUI
- Added tool to display version information of all relevant currently installed drivers
- New version of Power Viewer Plus, [Version 7.0](#)

2.17 Version 4.2.0

Released: November 2014

Functional improvements:

- Synchronized device change events for NRPxxS[N] series sensors with the end of the boot procedure of the firmware
- Added new, re-written S-Parameter tool
- Added optional VXI Plug&Play driver installation and demo programs

Known issues:

- Firmware update program PureFW sometimes ends prematurely when updating NRPxxS[N] series sensors via network (but firmware update succeeds anyway)
- Firmware update program PureFW sometimes has access violation on Windows XP
- WebGUI of NRPxxSN network sensor may exhibit rendering errors when used with Internet Explorer. If possible, a different browser should be used
- Uninstallation of NRP-Toolkit on a system with activated UAC sometimes leaves an empty NRP-Toolkit folder in the Start Menu until next reboot

2.18 Version 4.1.0

Released: September 2014

Functional improvements:

- Added support for additional power sensors (NRPxxS[N] series)
- New tools for Firmware Update, S-Parameter management and basic interactive I/O
- Included new Terminal Tool NrpTerm2 replacing ancient USB Term

2.19 Version 4.0.0

Released: August 2014

Functional improvements:

- Updated WHQL certified kernel-mode drivers for Microsoft Windows® 7 (32-bit/64-bit) and Windows® 8 (32-bit/64-bit)
- Added useful Uncertainty Calculator tool and documentation
- Fixed NRP-Z5 support where the runtime environment could have been initialized twice under certain conditions
- New version of Power Viewer Plus, [Version 6.4](#)

2.20 Version 3.1.0

Released: May 2013

Functional improvements:

- Introduced new WHQL certified kernel-mode drivers, adding support for Microsoft Windows® 8 (32-bit/64-bit)
- Locale independent floating point data entry in vintage Power Viewer

- New version of Power Viewer Plus, [Version 6.1](#)

2.21 Version 2.3.1

Released: January 2013

Functional improvements:

- Added support for R&S® USB Hub R&S® NRP-Z5
- New version of Power Viewer Plus, [Version 5.9](#)

2.22 Version 2.2.0

Released: July 2012

Functional improvements:

- New version of Power Viewer Plus, [Version 5.6](#)

2.23 Version 2.1.19

Released: May 2012

Functional improvements:

- Power Viewer Plus, [Version 5.5](#)
- MacOS and Linux: Updated VXI PnP driver
 - Zeroing function has timed out with NRP-Z8x sensors
 - Fixed potential dead-lock situation in `rsnrpz_isMeasurementComplete()`
- MacOS: Updated list of supported NRP-Z sensors in `NrpLib` driver

2.24 Version 2.1.18

Released: April 2012

Functional improvements:

- Power Viewer Plus, [Version 5.4](#)

2.25 Version 2.1.17

Released: March 2012

Intermediate release

- Intermediate. Not publically released

2.26 Version 2.1.16

Released: January 2012

Functional improvements:

- Power Viewer Plus, [Version 5.3](#)

2.27 Version 2.1.15

Released: October 2011

Functional improvements:

- Power Viewer Plus, [Version 5.0](#)

2.28 Version 2.1.14

Released: July 2011

Functional improvements:

- Bugfix in Silent Installation

2.29 Version 2.1.12

Released: February 2011

Functional improvements:

- Added new NRP Sensors to USB Driver (NRP-Z211, NRP-Z221)
- Power Viewer Plus, [Version 4.1](#)

Issues eliminated:

- -

2.30 Version 2.1.10

Released: February 2011

Functional improvements:

- Firmware Update: changed messages during the progress to prevent sensor unplugging
- Power Viewer Plus, [Version 4.0](#)

Issues eliminated:

- -

2.31 Version 2.1.6

Released: August 2010

Functional improvements:

- New S-Parameter Update Tool to load more S2P files into an NRP-Z81
- No Wizards or other Dialogs occur after plugging a new sensor to the PC
- Power Viewer Plus, [Version 3.3](#)

Issues eliminated:

- -

3 Power Viewer Plus

3.1 Version 7.1 (and higher)

Released: August 2015

- Power Viewer Plus has been separated from the NRP-Toolkit. Starting with this version the application is available as a separate package. Search R&S® websites for the appropriate installer

3.2 Version 7.0

Released: May 2015

Functional improvements:

- Sensor connection via VXI11 support added
- LAN sensor management dialog added
- LAN sensor settings dialog added
- dB μ V added to continuous average panel
- support for TRIG2 trigger (SMB connector) added

Functional Change:

- Script language changed from proprietary format to JavaScript. Existing script files are no longer compatible and must be migrated

Issues eliminated:

- Fixed bug in S-paramer dialog when a new device was added

3.3 Version 6.4

Released: August 2014

Functional improvements:

- Configurable separator in data log output-file
- Unit 'Voltage' added to Continuous Average display
- Minor bugfixes

3.4 Version 6.1

Released: May 2013

Functional improvements:

- S-parameter management dialog added (Windows version only)
- New dialog to control gamma correction and s-parameter correction state

3.5 Version 5.9

Released: January 2013

Functional improvements:

- Data log: data log repeats old data in empty bins
- Multi channel measurement: more robust against user interactions due to better internal data buffering
- Script mode: NRT01 added to the list of accepted VISA devices
- Script mode: ';' cannot be used any longer as comment
- Script mode: new command 'CONVERT SCALAR' added
- Script mode: improved syntax highlighting
- Scripting: new command 'GRAPH' with Y-axis autoscaling to 1-2-5 grid displays time series
- Trace: corrected limits that apply to reference level and trigger level
- Trace: autoseg algorithm improved
- Data log: max. recording time increased to 99 days
- Continuous measurement: improved display
- Continuous measurement: average filter resets only if frequency is changed
- Analysis panel: panel is now more compact and shows only the enabled channel widgets
- Improved text formatting in histogram and QQ-plot
- Continuous, multi-channel: average count can be increased up to 1M depending on sensor
- Data log: improved zoom-in algorithm

Issues eliminated:

- Updated application icon to new R&S style
- Debug dialog: fixed USB tree issue with USB3 devices and new hardware

3.6 Version 5.6

Released: July 2012

Functional improvements:

- New variable `_TIME` added to script mode
- SCPI queries improved in script mode

Issues eliminated:

- Corrected USB ID for FSH-Z1

3.7 Version 5.5

Released: May 2012

Functional improvements:

- MacOS and Linux only: Recompiled with updated VXI PnP driver code

3.8 Version 5.4

Released: March 2012

Functional improvements:

- Added support for new power sensors

Issues eliminated:

- Small internal bugfixes and typo corrections

Known issues:

- First start of this version resets the application colour settings to factory defaults

3.9 Version 5.3

Released: January 2012

Functional improvements:

- `.nrp` file extension is assigned to Power Viewer Plus

- Selective suspend mode can be turned off globally from settings panel
- New USB diagnostic panel

Issues eliminated:

- Fixed automatic pulse meas. gate for Z8x firmware ≥ 1.33
- Long Distance mode setting corrected
- Fixed behaviour of trigger buttons in trace measurement
- Datalog shows warning message if wrong measurement is set
- Datalog did sometimes omit one grid line
- Version information in executable file corrected

3.10 Version 5.0

Released: October 2011

Functional improvements:

- new functionality in script mode (formerly terminal mode)
- updated printer color set and print layout
- new menu entry 'reset measurement' applies default settings
- new menu entry 'exit without saving'
- data processing panels and continuous measurement supports dBW
- functionality added to automatic pulse analysis
- improved startup time by restricting internal search path
- added keyboard shortcuts to menu entries
- power and voltage thresholds are not converted into each other when switching between voltage- and power-related in automatic pulse analysis settings
- improved run/stop indicator
- improved trace update rate with large average filter counts
- new message log window
- new status output windows
- main application window can be sized to below 640 x 480 pixels
- new view modes in trace measurement modes
- marker and gated readings are now related to the selected view mode
- trigger mode 'free run' added to trace
- available S-parameter sets are listed on status panel
- support for FSH-Z18 sensor added

Issues eliminated:

- the initial progress dialog did not disappear on some installations
- mouse y-zoom in trace mode did not follow 1/3/5 rule
- splitter in main window did not memorize the size settings
- the multi-channel measurement has sent the value of Ch1 instead of Mx to the data processing panels
- marker search to the right did accidentally search to the left side
- trace display did sometimes not properly react to mouse events

3.11 Version 4.1

Released: April 2011

Functional improvements:

- added color settings dialog
- application uses new style
- hardcopy function added that generates a file on the desktop
- time to last trigger event is shown in trace measurement
- the low level driver version number is checked and compared against minimum requirements
- !SAVE command added to scripting
- minimum permissible reference level in trace changed from 100 nW to 10 nW
- added new view modes in trace measurement: dots, moving average
- default aperture time changed to 5 ms for Z56/57
- updated R&S support hotline contact information

Issues eliminated:

- Trace auto set sometimes caused an error message about an invalid number of points
- limit monitor could have crashed if many incidents were recorded in a short period of time

3.12 Version 4.0

Released: February 2011

Functional improvements:

- added READ:BUF? and READ:BUF:AUX? to terminal script language
- Continuous Windows shows 'HOLD' if measurement was stopped
- Improved the representation of numeric readings (resolution, lower limit)
- All data processing modules receive watts instead of dBm. The conversion to dBm is done locally in the data processing module
- Added a limit monitoring module
- Added new command line options
- updated low level instrument drivers, fixed potential crash during startup on Windows XP
- updated to QT 4.7.0 framework
- timeslot shows 'No Trigger' message if no trigger is detected

Issues eliminated:

- Fixed a bug in the data log module that caused crash during startup
- The trace mode used auto trigger when set to single trigger mode
- level offset was not correctly applied in timeslot bar chart display
- auto set did not work correctly

- reset moving average filter when reconfiguring a measurement

3.13 Version 3.3

Released: August 2010

Functional improvements:

- New Analysis Panel
- New terminal module added for processing SCPI command scripts or implementation of custom measurements
- Trace: New algorithm type 'PEAK' supported for automatic pulse analysis
- Trace: Improved trigger settings
- Menu bars added to all measurement windows
- Data Log: Statistics mode is enabled by default
- General UI improvements
- Continuous: simulation uses 10dB attenuator pad for S-parameter set when enabled
- Updated command line options
- The status window is automatically raised in case of measurement errors
- Anti aliasing added for drawing trace data
- Firmware Update: New URL for R&S firmware page
- Timeslot: Measurements are now done at a fast rate but UI updates are limited to 1/200 ms
- Timeslot: W and dBm readings are now forwarded to Data Processing windows

Issues eliminated:

- Trace: Potential stack overflow during auto adjust fixed
- Trace: Time gated measurements did not get updated when the window was iconized
- Trace: Horizontal cursor lines where sometimes drawn outside of the visible area
- Trace: Level offset was not always correctly updated in the trace display
- Data Log: Context menu did not always represent the current statistics state
- Data Log: Channel settings were not always properly saved in the project file
- Statistics: Potential crash fixed in table mode
- Statistics: Simulation did not handle the level offset correctly
- Timeslot: Measurement did not get updated with global sensor settings (offset/freq/...)
- Continuous: The window sometimes showed up empty due to erroneous splitter settings

3.14 Version 3.2

Released: March 2010

Functional improvements:

- PDF uses video smoothing of 32 traces
- CCDF displays overall peak and peak/average ratio
- Optional video filter and smoothing added for continuous measurement mode
- Linear and log. Scale in trace mode handled separately
- Fast mode for continuous power measurements enabled by default
- Channel assignment is now in separate dialog
- Better formatting of numeric values in many measurements
- Support for high resolution pulse analysis added

Issues eliminated:

- Improved font size matching on some machines
- CCDF peak reading corrected
- Settings panel could not be hidden properly
- Marker functions in trace mode corrected
- Auto Set in trace mode corrected

3.15 Version 3.1

Released: January 2010

Functional improvements:

- The tooltip shows the sensor type in the Continuous measurement mode
- Debug feature `contav.fastmode` added for faster Continuous mode measurements

Issues eliminated:

- Corrected minimum aperture value for all 3-path diode sensors
- Fixed potential source for crash in the Continuous Measurement mode
- Pk/Av reading corrected in the Statistics measurement mode

3.16 Version 3.0

Released: January 2010

Functional improvements:

- Added level overage warning in trace and stat. mode, acoustic alert in continuous mode, measurements keep running in overage
- New command line options added, application colours can be changed
- New sensors added
- Improved handling of S-parameter settings
- Pulse measurement thresholds can be set in % voltage or % power
- Level range in timeslot mode can be changed
- Improved sensor simulation
- Added trigger offset setting in trace mode
- Time and level lines in trace mode can be moved simultaneously
- User interface improvements

Issues eliminated:

- .csv export did not use correct locale
- corrected maximum possible aperture time for NRP-Z81
- possible deadlock in trace mode fixed
- fixed font size problems that occurred on some installations

3.17 Version 2.3

Released: July 2009

Functional improvements:

- Data log captures up to 20000 points and directly writes to file while measurement is running
- Improved data representation in log window
- Continuous mode provides quantile-normal plot for evaluation of power distribution
- S-parameter check box disabled if sensor does not contain S-parameter sets
- Improved marker functionality in the trace mode
- Improved multi channel measurement mode with support for up to 16 sensors
- Increased power range of trace windows to MW for high power applications
- Improved time and level line handling in trace mode
- Minimum sensor firmware requirement for NRP-Z81 is 1.18

Issues eliminated:

- Background sensor scanning could have caused a deadlock situation
- Running the Cont. mode in simulation could have caused NaN or Inv readings
- Trace mode trigger position was sometimes incorrectly saved in project file

- Switching between linear and log. Display in the trace mode did not work correctly
- if large offset values were used
- NRP-Z22 used erroneous configuration in Cont. mode
- Time (H:M:S) calculation corrected in data log window

3.18 Version 2.2 / 2.1

Released: March 2009

Functional improvements:

- Continuous measurement windows can resize
- Increased resolution in the Continuous measurement mode
- LCD background effect can be disabled
- New entry fields with tooltip help indicating the input ranges
- Warning text for SIMULATION mode
- Improved Continuous measurement mode and adjustable range of analog meter
- Statistics mode supports PDF, CDF and CCDF

Issues eliminated:

- Minimum trace time limit corrected for NRP-Z81
- Y/div was set to zero when changing from log. To linear scale
- Reference trace (trace mode) interfered with measurement trace
- Level offsets were applied twice in Multi channel mode
- Default font changed to 'Helvetica' corrects erroneous font rendering on some installations
- CCDF and PDF corrections
- Continuous mode did not correctly switch to relative readings
- Firmware version string of NRP-Z37 was not properly evaluated

3.19 Version 2.0

Released: January 2010

Functional improvements:

- Automatic pulse analysis added in trace mode (NRP-Z81, firmware ≥ 1.20)
- Improved min-max (signal envelope) view in trace mode
- Improved print report for statistics, timeslot and trace mode
- CCDF shows probabilities down to $1E-5$ and analyses up to 768 million samples
- CCDF level resolution increased in relative mode
- Dots plotted on CCDF curve if numeric table is enabled
- Improved .csv data export for statistics data
- Improved multi channel measurement settings
- Peak to average reading added in continuous mode
- Improved data log functionality

- New dialog for updating sensor firmware
- Support for NRP-Z31 sensor
- S-parameter sets can be activated for all measurements
- Gamma correction can be configured for all measurements

Issues eliminated:

- Zeroing sensor had no effect when a new measurement got started
- Fixed invalid CCDF display in case sensor data was invalid
- Corrected erroneous reading in CCDF numeric result table
- Fixed trace auto set algorithm when noise or DC was applied
- Fixed a potential crash risk if trace data got corrupted during USB transmission
- Fixed a potential dead lock situation that could occur after an unsuccessful firmware update
- Fixed timeslot trigger settings

4 Installation

4.1 Prerequisites

The R&S NRP-Toolkit software is designed to run on a Microsoft Windows based operating system (Windows 7, 8, 10). The R&S NRP-Toolkit installation requires about 70 Megabytes of free space on the hard disk.

The traditional R&S NRP-Z series of power sensors as well as the newer R&S NRPxxS/SN, NRPxxA/AN and NRPxxT/TN series are self-contained measurement device which can directly be connected to a PC's USB port. For the R&S NRP-Z series either the R&S NRP Z3 or Z4 adapter cable is necessary. The NRPxxS/SN, NRPxxA/AN, NRPxxT/TN series power sensors come with a detachable USB adapter cable for connection to a PC (when orders with NRP-ZKU option). If the passive NRP Z4 or the NRP-ZKU cable is used the USB port must be capable of driving high power USB devices up to 500 mA.

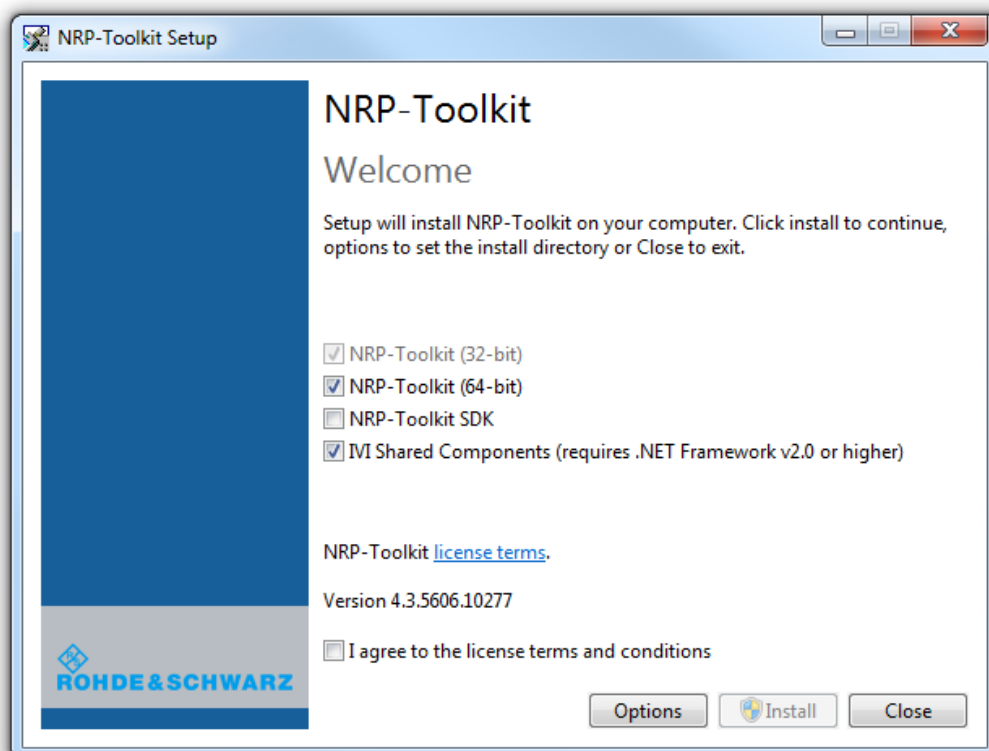
Note: If you are up to use the frequency selective power sensor NRQ6, an installed VISA is required on the controlling host. If you do not yet have a VISA on your PC, please navigate to

https://www.rohde-schwarz.com/de/applikationen/r-s-visa-application-note_56280-148812.html

From there you can download the R&S VISA installer free of charge.

4.2 Execution of the Installer program

After downloading the R&S® NRP-Toolkit Installer executable simply start the *.exe file. The main dialog provides the selection of including optional packages.



The basic package(s) with the low-level drivers (Kernel modules) need to be installed always. If you plan to develop individual programs, the SDK option (Software Development Kit) should also be selected. This provides header-files, link libraries and example source code for programmers -- these parts will be installed in `C:\ProgramData\Rohde-Schwarz\NRP-Toolkit-SDK`.

The NRPxxS/SN, NRPxxA/AN and NRPxxT/TN series power sensors constitute composite USB devices. This means, the devices provide a USBTMC interface and the traditional (so called NRP Legacy) interface in parallel. Therefore the NRP-Toolkit Installer has an option to add the driver for the USBTMC interface by means of the corresponding IVI Shared Component.

There are some command-line switches for the NRP-Toolkit installer which allow system integrators to call the installer from their own installation procedure. In this case it is often desirable to run the sub-installer silently. There could also be situations where you don't want to install the IVI Share Components (for example, because you already have them on the system)

Command-line switch	Description
/install /repair /uninstall /layout	Installs, repairs, uninstalls the NRP-Toolkit or creates a complete local copy of the bundle. 'install' is the default
/passive /quiet	Displays minimal user interface with no prompts or displays no user interface at all
/norestart	Suppress any attempts to restart. By default the user interface will prompt before restart
/log <filename.txt>	Logs to a specific file. By default a log file is created in the system's temp directory (%TEMP%)
InstallUsbTmc=1 0	Select or deselect IVI Shared Components for Installation

Examples (the version numbers are only placeholders):

```
NrpToolkit-4.3.5606.10277 /install /quiet InstallUsbTmc=0
NrpToolkit-4.3.5606.10277 /uninstall /passive
NrpToolkit-4.3.5606.10277 /install /log NrpToolkit_DevServer.txt
```

4.3 Update Procedure

The R&S® NRP-Toolkit Installer is capable of updating a previously installed (older) USB device driver on your system. This procedure removes any existing NRP driver from the Windows installation and clears corresponding registry entries. Subsequently the new device drivers become installed. This process may take several minutes.

Whenever USB drivers are updated it is required that the sensors are unplugged and reconnected again. Windows automatically installs the appropriate driver as soon as each sensor is connected initially to the PC.

Note: If you did not install the R&S® NRP-Toolkit software, Windows will not be able to access the power sensor(s). Instead, the Windows device manager shows an unknown USB device that is marked with a yellow exclamation mark. In this case, please proceed as follows:

- Abort the dialog for driver installation.
 - Install the R&S®NRP-Toolkit from the CD-ROM or from your downloaded package. Then manually assign the USB driver from the NRP-Toolkit to the R&S® NRP device.
 - Go to Control Panel – Add/Remove Hardware and start the hardware assistant to search for new components.
 - Select the R&S® NRP power sensor in the list of hardware components and complete the driver installation.
 - Unplug the power sensor and reconnect it.
-

5 Open Source Acknowledgement

This software includes icons originating from third parties that is subject to the GNU Lesser General Public License (LGPL). The exact terms of this license are reproduced in the materials provided with this product. Please refer to the links below for said products.

Package	Link	License
Crystal Icons	http://www.everaldo.com http://www.yellowicon.com	LGPL2

5.1 GNU LESSER GENERAL PUBLIC LICENSE

Version 2.1, February 1999

Copyright (C) 1991, 1999 Free Software Foundation, Inc.
51 Franklin Street, Fifth Floor, Boston, MA 02110-1301 USA
Everyone is permitted to copy and distribute verbatim copies
of this license document, but changing it is not allowed.

[This is the first released version of the Lesser GPL. It also counts
as the successor of the GNU Library Public License, version 2, hence
the version number 2.1.]

Preamble

The licenses for most software are designed to take away your freedom to share and change it. By contrast, the GNU General Public Licenses are intended to guarantee your freedom to share and change free software--to make sure the software is free for all its users.

This license, the Lesser General Public License, applies to some specially designated software packages--typically libraries--of the Free Software Foundation and other authors who decide to use it. You can use it too, but we suggest you first think carefully about whether this license or the ordinary General Public License is the better strategy to use in any particular case, based on the explanations below.

When we speak of free software, we are referring to freedom of use, not price. Our General Public Licenses are designed to make sure that you have the freedom to distribute copies of free software (and charge for this service if you wish); that you receive source code or can get it if you want it; that you can change the software and use pieces of it in new free programs; and that you are informed that you can do these things.

To protect your rights, we need to make restrictions that forbid distributors to deny you these rights or to ask you to surrender these rights. These restrictions translate to certain responsibilities for you if you distribute copies of the library or if you modify it.

For example, if you distribute copies of the library, whether gratis or for a fee, you must give the recipients all the rights that we gave you. You must make sure that they, too, receive or can get the source code. If you link other code with the library, you must provide complete object files to the recipients, so that they can relink them with the library after making changes to the library and recompiling it. And you must show them these terms so they know their rights.

We protect your rights with a two-step method: (1) we copyright the library, and (2) we offer you this license, which gives you legal permission to copy, distribute and/or modify the library.

To protect each distributor, we want to make it very clear that there is no warranty for the free library. Also, if the library is modified by someone else and passed on, the recipients should know that what they have is not the original version, so that the original author's reputation will not be affected by problems that might be introduced by others.

Finally, software patents pose a constant threat to the existence of any free program. We wish to make sure that a company cannot effectively restrict the users of a free program by obtaining a restrictive license from a patent holder. Therefore, we insist that any patent license obtained for a version of the library must be consistent with the full freedom of use specified in this license.

Most GNU software, including some libraries, is covered by the ordinary GNU General Public License. This license, the GNU Lesser General Public License, applies to certain designated libraries, and is quite different from the ordinary General Public License. We use this license for certain libraries in order to permit linking those libraries into non-free programs.

When a program is linked with a library, whether statically or using a shared library, the combination of the two is legally speaking a combined work, a derivative of the original library. The ordinary General Public License therefore permits such linking only if the entire combination fits its criteria of freedom. The Lesser General Public License permits more lax criteria for linking other code with the library.

We call this license the "Lesser" General Public License because it does Less to protect the user's freedom than the ordinary General Public License. It also provides other free software developers Less of an advantage over competing non-free programs. These disadvantages are the reason we use the ordinary General Public License for many libraries. However, the Lesser license provides advantages in certain special circumstances.

For example, on rare occasions, there may be a special need to encourage the widest possible use of a certain library, so that it becomes a de-facto standard. To achieve this, non-free programs must be allowed to use the library. A more frequent case is that a free library does the same job as widely used non-free libraries. In this case, there is little to gain by limiting the free library to free software only, so we use the Lesser General Public License.

In other cases, permission to use a particular library in non-free programs enables a greater number of people to use a large body of free software. For example, permission to use the GNU C Library in non-free programs enables many more people to use the whole GNU operating system, as well as its variant, the GNU/Linux operating system.

Although the Lesser General Public License is Less protective of the users' freedom, it does ensure that the user of a program that is linked with the Library has the freedom and the wherewithal to run that program using a modified version of the Library.

The precise terms and conditions for copying, distribution and modification follow. Pay close attention to the difference between a "work based on the library" and a "work that uses the library". The former contains code derived from the library, whereas the latter must be combined with the library in order to run.

TERMS AND CONDITIONS FOR COPYING, DISTRIBUTION AND MODIFICATION

0. This License Agreement applies to any software library or other program which contains a notice placed by the copyright holder or other authorized party saying it may be distributed under the terms of this Lesser General Public License (also called "this License"). Each licensee is addressed as "you".

A "library" means a collection of software functions and/or data prepared so as to be conveniently linked with application programs (which use some of those functions and data) to form executables.

The "Library", below, refers to any such software library or work which has been distributed under these terms. A "work based on the Library" means either the Library or any derivative work under copyright law: that is to say, a work containing the Library or a portion of it, either verbatim or with modifications and/or translated straightforwardly into another language. (Hereinafter, translation is included without limitation in the term "modification".)

"Source code" for a work means the preferred form of the work for making modifications to it. For a library, complete source code means all the source code for all modules it contains, plus any associated interface definition files, plus the scripts used to control compilation and installation of the library.

Activities other than copying, distribution and modification are not covered by this License; they are outside its scope. The act of running a program using the Library is not restricted, and output from such a program is covered only if its contents constitute a work based on the Library (independent of the use of the Library in a tool for writing it). Whether that is true depends on what the Library does and what the program that uses the Library does.

1. You may copy and distribute verbatim copies of the Library's complete source code as you receive it, in any medium, provided that you conspicuously and appropriately publish on each copy an appropriate copyright notice and disclaimer of warranty; keep intact all the notices that refer to this License and to the absence of any warranty; and distribute a copy of this License along with the Library.

You may charge a fee for the physical act of transferring a copy, and you may at your option offer warranty protection in exchange for a fee.

2. You may modify your copy or copies of the Library or any portion of it, thus forming a work based on the Library, and copy and distribute such modifications or work under the terms of Section 1 above, provided that you also meet all of these conditions:

- **a)** The modified work must itself be a software library.
- **b)** You must cause the files modified to carry prominent notices stating that you changed the files and the date of any change.
- **c)** You must cause the whole of the work to be licensed at no charge to all third parties under the terms of this License.
- **d)** If a facility in the modified Library refers to a function or a table of data to be supplied by an application program that uses the facility, other than as an argument passed when the facility is invoked, then you must make a good faith effort to ensure that, in the event an application does not supply such function or table, the facility still operates, and performs whatever part of its purpose remains meaningful.

(For example, a function in a library to compute square roots has a purpose that is entirely well-defined independent of the application. Therefore, Subsection 2d requires that any application-supplied function or table used by this function must be optional: if the application does not supply it, the square root function must still compute square roots.)

These requirements apply to the modified work as a whole. If identifiable sections of that work are not derived from the Library, and can be reasonably considered independent and separate works in themselves, then this License, and its terms, do not apply to those sections when you distribute them as separate works. But when you distribute the same sections as part of a whole which is a work based on the Library, the distribution of the whole must be on the terms of this License, whose permissions for other licensees extend to the entire whole, and thus to each and every part regardless of who wrote it.

Thus, it is not the intent of this section to claim rights or contest your rights to work written entirely by you; rather, the intent is to exercise the right to control the distribution of derivative or collective works based on the Library.

In addition, mere aggregation of another work not based on the Library with the Library (or with a work based on the Library) on a volume of a storage or distribution medium does not bring the other work under the scope of this License.

3. You may opt to apply the terms of the ordinary GNU General Public License instead of this License to a given copy of the Library. To do this, you must alter all the notices that refer to this License, so that they refer to the ordinary GNU General Public License, version 2, instead of to this License. (If a newer version than version 2 of the ordinary GNU General Public License has appeared, then you can specify that version instead if you wish.) Do not make any other change in these notices.

Once this change is made in a given copy, it is irreversible for that copy, so the ordinary GNU General Public License applies to all subsequent copies and derivative works made from that copy.

This option is useful when you wish to copy part of the code of the Library into a program that is not a library.

4. You may copy and distribute the Library (or a portion or derivative of it, under Section 2) in object code or executable form under the terms of Sections 1 and 2 above provided that you accompany it with the complete corresponding machine-readable source code, which must be distributed under the terms of Sections 1 and 2 above on a medium customarily used for software interchange.

If distribution of object code is made by offering access to copy from a designated place, then offering equivalent access to copy the source code from the same place satisfies the requirement to distribute the source code, even though third parties are not compelled to copy the source along with the object code.

5. A program that contains no derivative of any portion of the Library, but is designed to work with the Library by being compiled or linked with it, is called a "work that uses the Library". Such a work, in isolation, is not a derivative work of the Library, and therefore falls outside the scope of this License.

However, linking a "work that uses the Library" with the Library creates an executable that is a derivative of the Library (because it contains portions of the Library), rather than a "work that uses the library". The executable is therefore covered by this License. Section 6 states terms for distribution of such executables.

When a "work that uses the Library" uses material from a header file that is part of the Library, the object code for the work may be a derivative work of the Library even though the source code is not. Whether this is true is especially significant if the work can be linked without the Library, or if the work is itself a library. The threshold for this to be true is not precisely defined by law.

If such an object file uses only numerical parameters, data structure layouts and accessors, and small macros and small inline functions (ten lines or less in length), then the use of the object file is unrestricted, regardless of whether it is legally a derivative work. (Executables containing this object code plus portions of the Library will still fall under Section 6.)

Otherwise, if the work is a derivative of the Library, you may distribute the object code for the work under the terms of Section 6. Any executables containing that work also fall under Section 6, whether or not they are linked directly with the Library itself.

6. As an exception to the Sections above, you may also combine or link a "work that uses the Library" with the Library to produce a work containing portions of the Library, and distribute that work under terms of your choice, provided that the terms permit modification of the work for the customer's own use and reverse engineering for debugging such modifications.

You must give prominent notice with each copy of the work that the Library is used in it and that the Library and its use are covered by this License. You must supply a copy of this License. If the work during execution displays copyright notices, you must include the copyright notice for the Library among them, as well as a reference directing the user to the copy of this License. Also, you must do one of these things:

- **a)** Accompany the work with the complete corresponding machine-readable source code for the Library including whatever changes were used in the work (which must be distributed under Sections 1 and 2 above); and, if the work is an executable linked with the Library, with the complete machine-readable "work that uses the Library", as object code and/or source code, so that the user can modify the Library and then relink to produce a modified executable containing the modified Library. (It is understood that the user who changes the contents of definitions files in the Library will not necessarily be able to recompile the application to use the modified definitions.)
- **b)** Use a suitable shared library mechanism for linking with the Library. A suitable mechanism is one that (1) uses at run time a copy of the library already present on the user's computer system, rather than copying library functions into the executable, and (2) will operate properly with a modified version of the library, if the user installs one, as long as the modified version is interface-compatible with the version that the work was made with.
- **c)** Accompany the work with a written offer, valid for at least three years, to give the same user the materials specified in Subsection 6a, above, for a charge no more than the cost of performing this distribution.
- **d)** If distribution of the work is made by offering access to copy from a designated place, offer equivalent access to copy the above specified materials from the same place.
- **e)** Verify that the user has already received a copy of these materials or that you have already sent this user a copy.

For an executable, the required form of the "work that uses the Library" must include any data and utility programs needed for reproducing the executable from it. However, as a special exception, the materials to be distributed need not include anything that is normally distributed (in either source or binary form) with the major components (compiler, kernel, and so on) of the operating system on which the executable runs, unless that component itself accompanies the executable.

It may happen that this requirement contradicts the license restrictions of other proprietary libraries that do not normally accompany the operating system. Such a contradiction means you cannot use both them and the Library together in an executable that you distribute.

7. You may place library facilities that are a work based on the Library side-by-side in a single library together with other library facilities not covered by this License, and distribute such a combined library, provided that the separate distribution of the work based on the Library and of the other library facilities is otherwise permitted, and provided that you do these two things:

- **a)** Accompany the combined library with a copy of the same work based on the Library, uncombined with any other library facilities. This must be distributed under the terms of the Sections above.
- **b)** Give prominent notice with the combined library of the fact that part of it is a work based on the Library, and explaining where to find the accompanying uncombined form of the same work.

8. You may not copy, modify, sublicense, link with, or distribute the Library except as expressly provided under this License. Any attempt otherwise to copy, modify, sublicense, link with, or distribute the Library is void, and will automatically terminate your rights under this License. However, parties who have received copies, or rights, from you under this License will not have their licenses terminated so long as such parties remain in full compliance.

9. You are not required to accept this License, since you have not signed it. However, nothing else grants you permission to modify or distribute the Library or its derivative works. These actions are prohibited by law if you do not accept this License. Therefore, by modifying or distributing the Library (or any work based on the Library), you indicate your acceptance of this License to do so, and all its terms and conditions for copying, distributing or modifying the Library or works based on it.

10. Each time you redistribute the Library (or any work based on the Library), the recipient automatically receives a license from the original licensor to copy, distribute, link with or modify the Library subject to these terms and conditions. You may not impose any further restrictions on the recipients' exercise of the rights granted herein. You are not responsible for enforcing compliance by third parties with this License.

11. If, as a consequence of a court judgment or allegation of patent infringement or for any other reason (not limited to patent issues), conditions are imposed on you (whether by court order, agreement or otherwise) that contradict the conditions of this License, they do not excuse you from the conditions of this License. If you cannot distribute so as to satisfy simultaneously your obligations under this License and any other pertinent obligations, then as a consequence you may not distribute the Library at all. For example, if a patent license would not permit royalty-free redistribution of the Library by all those who receive copies directly or indirectly through you, then the only way you could satisfy both it and this License would be to refrain entirely from distribution of the Library.

If any portion of this section is held invalid or unenforceable under any particular circumstance, the balance of the section is intended to apply, and the section as a whole is intended to apply in other circumstances.

It is not the purpose of this section to induce you to infringe any patents or other property right claims or to contest validity of any such claims; this section has the sole purpose of protecting the integrity of the free software distribution system which is implemented by public license practices. Many people have made generous contributions to the wide range of software distributed through that system in reliance on consistent application of that system; it is up to the author/donor to decide if he or she is willing to distribute software through any other system and a licensee cannot impose that choice.

This section is intended to make thoroughly clear what is believed to be a consequence of the rest of this License.

12. If the distribution and/or use of the Library is restricted in certain countries either by patents or by copyrighted interfaces, the original copyright holder who places the Library under this License may add an explicit geographical distribution limitation excluding those countries, so that distribution is permitted only in

or among countries not thus excluded. In such case, this License incorporates the limitation as if written in the body of this License.

13. The Free Software Foundation may publish revised and/or new versions of the Lesser General Public License from time to time. Such new versions will be similar in spirit to the present version, but may differ in detail to address new problems or concerns.

Each version is given a distinguishing version number. If the Library specifies a version number of this License which applies to it and "any later version", you have the option of following the terms and conditions either of that version or of any later version published by the Free Software Foundation. If the Library does not specify a license version number, you may choose any version ever published by the Free Software Foundation.

14. If you wish to incorporate parts of the Library into other free programs whose distribution conditions are incompatible with these, write to the author to ask for permission. For software which is copyrighted by the Free Software Foundation, write to the Free Software Foundation; we sometimes make exceptions for this. Our decision will be guided by the two goals of preserving the free status of all derivatives of our free software and of promoting the sharing and reuse of software generally.

NO WARRANTY

15. BECAUSE THE LIBRARY IS LICENSED FREE OF CHARGE, THERE IS NO WARRANTY FOR THE LIBRARY, TO THE EXTENT PERMITTED BY APPLICABLE LAW. EXCEPT WHEN OTHERWISE STATED IN WRITING THE COPYRIGHT HOLDERS AND/OR OTHER PARTIES PROVIDE THE LIBRARY "AS IS" WITHOUT WARRANTY OF ANY KIND, EITHER EXPRESSED OR IMPLIED, INCLUDING, BUT NOT LIMITED TO, THE IMPLIED WARRANTIES OF MERCHANTABILITY AND FITNESS FOR A PARTICULAR PURPOSE. THE ENTIRE RISK AS TO THE QUALITY AND PERFORMANCE OF THE LIBRARY IS WITH YOU. SHOULD THE LIBRARY PROVE DEFECTIVE, YOU ASSUME THE COST OF ALL NECESSARY SERVICING, REPAIR OR CORRECTION.

16. IN NO EVENT UNLESS REQUIRED BY APPLICABLE LAW OR AGREED TO IN WRITING WILL ANY COPYRIGHT HOLDER, OR ANY OTHER PARTY WHO MAY MODIFY AND/OR REDISTRIBUTE THE LIBRARY AS PERMITTED ABOVE, BE LIABLE TO YOU FOR DAMAGES, INCLUDING ANY GENERAL, SPECIAL, INCIDENTAL OR CONSEQUENTIAL DAMAGES ARISING OUT OF THE USE OR INABILITY TO USE THE LIBRARY (INCLUDING BUT NOT LIMITED TO LOSS OF DATA OR DATA BEING RENDERED INACCURATE OR LOSSES SUSTAINED BY YOU OR THIRD PARTIES OR A FAILURE OF THE LIBRARY TO OPERATE WITH ANY OTHER SOFTWARE), EVEN IF SUCH HOLDER OR OTHER PARTY HAS BEEN ADVISED OF THE POSSIBILITY OF SUCH DAMAGES.

END OF TERMS AND CONDITIONS

6 Customer Support

Technical support – where and when you need it

For quick, expert help with any Rohde & Schwarz equipment, contact one of our Customer Support Centers. A team of highly qualified engineers provides telephone support and will work with you to find a solution to your query on any aspect of the operation, programming or applications of Rohde & Schwarz equipment.

Up-to-date information and upgrades

To keep your instrument up-to-date and to be informed about new application notes related to your instrument, please send an e-mail to the Customer Support Center stating your instrument and your wish. We will take care that you will get the right information.

Europe, Africa, Middle East

Phone +49 89 4129 12345
customersupport@rohde-schwarz.com

North America

Phone 1-888-TEST-RSA (1-888-837-8772)
customersupport@rsa.rohde-schwarz.com

Latin America

Phone +1-410-910-7988
customersupport.la@rohde-schwarz.com

Asia/Pacific

Phone +65 65 13 04 88
customersupport.asia@rohde-schwarz.com