

R&S® Scheduler Suite

Release Notes

Software Version 02.55

© 2015 Rohde & Schwarz GmbH & Co. KG
Muehldorfstr. 15, 81671 Munich, Germany
Phone: +49 89 41 29 - 0
Fax: +49 89 41 29 12 164
E-mail: <mailto:info@rohde-schwarz.com>
Internet: <http://www.rohde-schwarz.com>

Subject to change

R&S® is a registered trademark of Rohde & Schwarz GmbH & Co. KG. Trade names are trademarks of the owners.

The following abbreviations are used throughout this document: R&S® Scheduler Suite is abbreviated as R&S Scheduler Suite, R&S® DVM is abbreviated as R&S DVM, R&S® DVMS is abbreviated as R&S DVMS

Table of Contents

| | | |
|----------|--|----------|
| 1 | Information on the Current Version and History..... | 3 |
| 1.1 | Version V02.55 | 3 |
| 1.2 | Version V02.54 | 3 |
| 1.3 | Version V02.50 | 3 |
| 1.4 | Version V02.40 | 4 |
| 1.5 | Version V02.30 | 4 |
| 1.6 | Version V02.20 | 4 |
| 1.7 | Version V02.10 | 5 |
| 1.8 | Version V02.01 | 5 |
| 2 | Modifications to the Documentation | 6 |
| 3 | Installation and Update | 7 |
| 3.1 | System Requirements | 7 |
| 3.2 | Installing the Software | 7 |
| 3.3 | Uninstalling the Software..... | 8 |
| 3.4 | Updating the Software..... | 8 |
| 4 | Customer Support | 9 |

1 Information on the Current Version and History

1.1 Version V02.55

Documentation updated.

1.2 Version V02.54

New Functionality

The R&S Scheduler SNMP agent provides the last measurement results via additional static OIDs

RF channel switching performs approx. 2 seconds faster on average

Changed Functionality

For DVMS, the input modules are now sorted according to their slot number

Fixed Issues

- Measurement table result update slowed down cycle processing time
- Trap user texts were not changed synchronously with channel switching
- MPEG-TS monitoring was not stopped reliably before channel switching
- Internal Router Edition potentially caused an SnmpBadValue error
- Vikinx sublime support was erroneous for switches with asymmetrical I/O interfaces
- "Same channel" error for DVBS/S2, although the measurement table entries differed in Band or Polarization
- For DVMS, "BER before BCH" results did not show up in measurement table

Known Issues

- No support of DVMS IP module

1.3 Version V02.50

Fixed Issues

- The SNMP agent sometimes did not provide measurement results for every alias
- DVB-H time slice state was always indicated as "On" in table view, regardless of its real state
- Some DVB-S/S2 Diseq settings did not work
- A certain BER result in DVB-S caused a "Carrier Lost" indication
- A certain PLP rotation value in DVB-T2 caused a "Carrier Lost" indication

Known Issues

- No support of DVMS IP module

1.4 Version V02.40

New Functionality

- Support for DVB-T2 in Graphical Log Viewer

Fixed Issues

- SNMP access with GetRequest to table measurementsSigInterfacesDvbtTable results for some (correct) indexes in error 'noSuchName'.

Known Issues

- No support of DVMS IP module

1.5 Version V02.30

New Functionality

- Support for DVB-T2

Fixed Issues

- 'Error logs' variable of SNMP agent was always zero.
- Measurement value limit checking behavior different from instrument.

1.6 Version V02.20

New Functionality

- SNMP agent to provide RF measurement results via remote SNMP control when R&S Scheduler is running on a R&S DVM or R&S DVMS instrument. See the user manual and R&S Scheduler's MIB file (RS-SCHEDULER-MIB.mi2) for further details.

Fixed Issues

- Application crash in TS Router Edition operating in 'External router' mode.

1.7 Version V02.10

New Functionality

- Support for R&S DVMS4
- Support for standard ISDB-T

Fixed Issues

- Graphical Log Viewer:
 - Y-axis of graph was labeled in some cases with only a tenth of the correct values.
 - In DVB-T mode, graphs were not drawn for values 'Reference frequency locked' to 'BER before Viterbi'.

1.8 Version V02.01

Initial release of R&S Scheduler Suite adopted for R&S DVMS.

2 Modifications to the Documentation

The current documentation is up-to-date.

3 Installation and Update

3.1 System Requirements

The R&S Scheduler Suite software can be installed on an R&S DVMS, R&S DVM or a computer.

R&S DVM

The TS monitoring option (R&S DVMS-K1) is required.

R&S DVMS

The TS monitoring option (R&S DVMS-K1) is required.

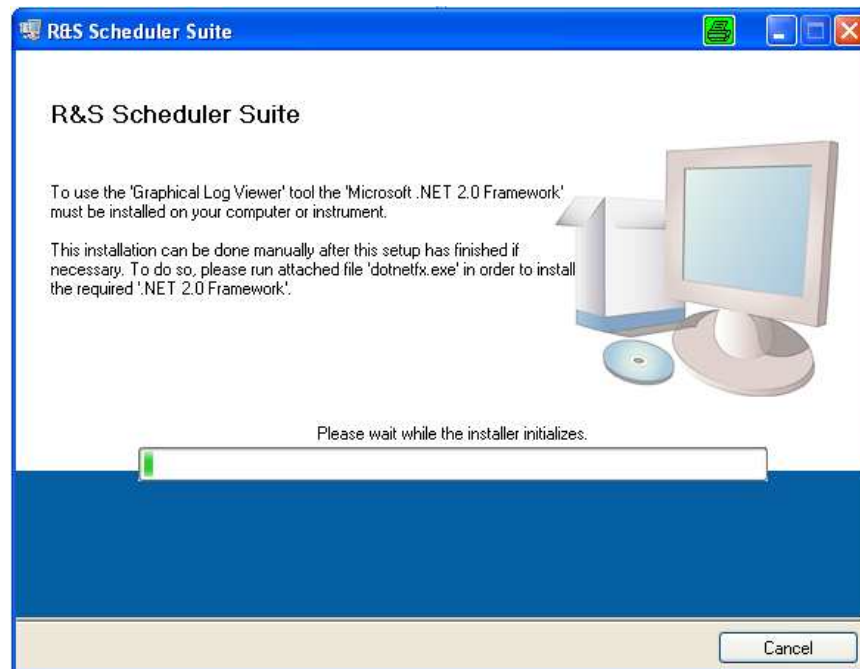
Computer

- Pentium[®] processor or equivalent at 133 MHz or higher
- 64 MB free memory space
- 50 MB free hard disk space
- Display resolution SVGA (800 x 600)
- Windows[®] 2000/XP/Vista operating system; for Windows[®] XP is Service Pack 2 required

3.2 Installing the Software

1. Extract the R&S Scheduler Suite archive to any drive that is accessible for your computer, R&S DVM or R&S DVMS (e.g. local drive, network drive or connected memory stick).
2. Double-click the extracted "setup.exe" file.

The setup dialog box is displayed.



3. Click "Next >>" to accept the default target directories.
4. Click " Next >>" to begin the installation.
The installation process is started.
5. Follow the instructions of the Setup Wizard.

3.3 Uninstalling the Software

To uninstall the R&S Scheduler Suite software, choose the following procedure:

1. Using the "Start" menu: Select "Control Panel", then "Software", then "Add or Remove Programs".
2. Select "R&S Scheduler Suite".
3. Click "Remove".

3.4 Updating the Software

1. Uninstall the software as described in section "[Uninstalling the Software](#)".
2. Install the software as described in section "[Installing the Software](#)".

4 Customer Support

Technical support – where and when you need it

For quick, expert help with any Rohde & Schwarz equipment, contact one of our Customer Support Centers. A team of highly qualified engineers provides telephone support and will work with you to find a solution to your query on any aspect of the operation, programming or applications of Rohde & Schwarz equipment.

Up-to-date information and upgrades

To keep your instrument up-to-date and to be informed about new application notes related to your instrument, please send an e-mail to the Customer Support Center stating your instrument and your wish. We will take care that you will get the right information.

Europe, Africa, Middle East

Phone +49 89 4129 12345

customersupport@rohde-schwarz.com

North America

Phone 1-888-TEST-RSA (1-888-837-8772)

customer.support@rsa.rohde-schwarz.com

Latin America

Phone +1-410-910-7988

customersupport.la@rohde-schwarz.com

Asia/Pacific

Phone +65 65 13 04 88

customersupport.asia@rohde-schwarz.com

China

Phone +86-800-810-8828 / +86-400-650-5896

customersupport.china@rohde-schwarz.com