

How to deal with the effects of CVE-2018-0886

Restore Remote Access to R&S instruments

V 1.01 Document date: 15.06.2018

This document describes possible ways to access R&S instruments after the security vulnerability CVE-2018-0886 is patched on your host PC but not on the R&S instrument or vice versa.

It is important to mention that access behavior is changed for the remote desktop in case the Client side has installed the current patches.

Please refer to the Microsoft article for more details in regards to the vulnerability:

<https://portal.msrc.microsoft.com/en-us/security-guidance/advisory/CVE-2018-0886>

Inhalt

1	Check Applicable Instruments.....	2
2	Changes When Using Remote Desktop.....	2
3	WSUS on your R&S instrument	4
3.1	Windows 7	4
3.2	Windows 10	4
4	Customer Support.....	5

1 Check Applicable Instruments

The following table shows an overview of affected instruments and the possible operating systems.

Device	Windows XP Embedded SP3	Windows Embedded 7 SP1 32-bit	Windows Embedded 7 SP1 64-bit	Windows 10 IoT 64 Bit Enterprise LTSC 1607
ZVL	X			
ZVB	X			
ZVA	X	X		
ZVT	X	X		
ZNC		X	X	
ZND			X	
ZNB		X	X	
ZNBT			X	
ZNL				X
ZNLE				X


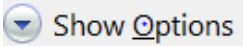
If the Remote Desktop Client was updated on your PC, the access behavior has changed slightly.

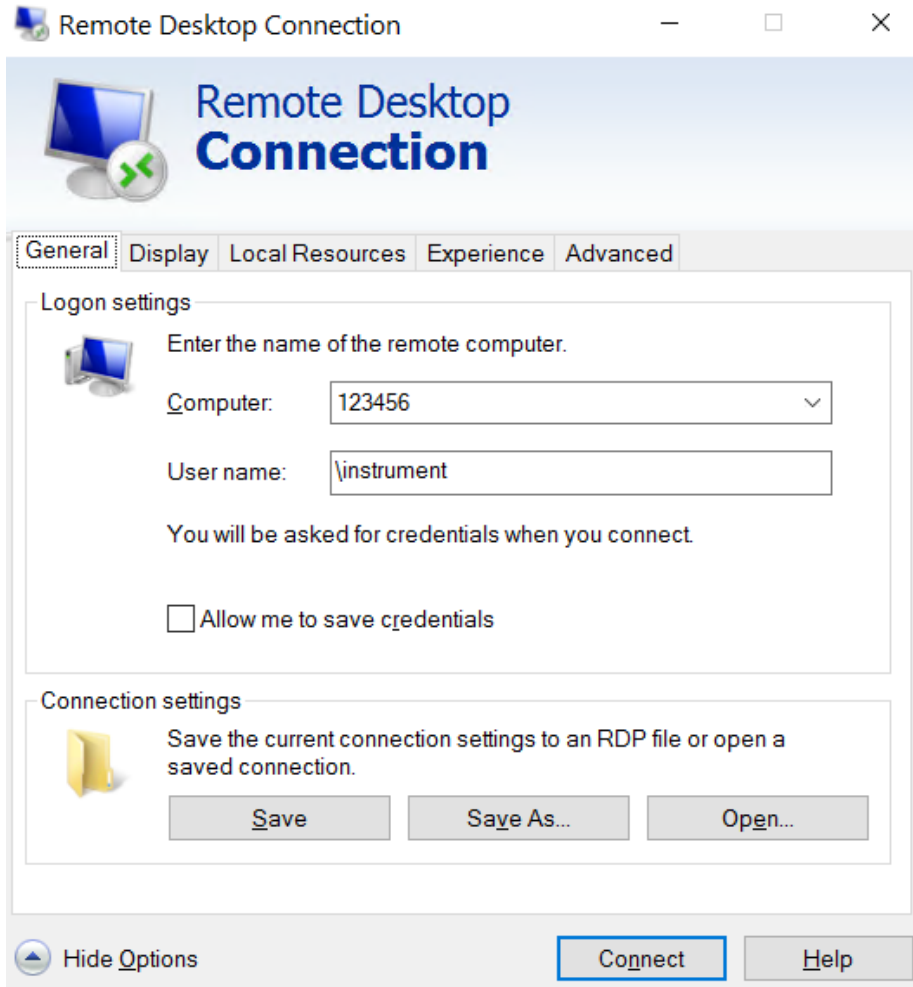
See next chapter.

2 Changes When Using Remote Desktop

The Login behavior changes slightly when connecting to an R&S instrument in case the Patch was installed on your PC.

The following instructions guide you step by step on how to use Microsoft remote desktop with the R&S instrument. The changes are highlighted in red.

-  Select the "Windows" icon in the toolbar to access the operating system.
- Locate the "Remote Desktop Connection" link in the "Start" menu.
The "Remote Desktop Connection" dialog box is displayed.
- Select the "Show Options" button. 
The dialog box is expanded to display the configuration data.



4. In the "Computer" field, enter the IP address of the R&S Instrument.

In the "User name" field, enter **"\instrument"** to log in as standard user, or **"\administrator"** to log in as an administrator ser. **The previous behavior did not require the "** at the beginning of the **"User name"**. **The "** is required once to change the Workgroup or Domain for the user.

Click **"Connect"** to start the connection and enter 894129 in the password field when prompted to enter the password.

3 WSUS on your R&S instrument

The following white papers describe how to install Windows updates on R&S instruments:

3.1 Windows 7

[1DC01: Malware Protection II White Paper Windows 7](#)

3.2 Windows 10

[1EF96: Malware Protection Windows 10](#)

4 Customer Support

Technical support – where and when you need it

For quick, expert help with any Rohde & Schwarz equipment, contact one of our Customer Support Centers. A team of highly qualified engineers provides telephone support and will work with you to find a solution to your query on any aspect of the operation, programming or applications of Rohde & Schwarz equipment.

Up-to-date information and upgrades

To keep your instrument up-to-date and to be informed about new application notes related to your instrument, please send an e-mail to the Customer Support Center stating your instrument and your wish. We will take care that you will get the right information.

Europe, Africa, Middle East

Phone +49 89 4129 12345

customersupport@rohde-schwarz.com

North America

Phone 1-888-TEST-RSA (1-888-837-8772)

customer.support@rsa.rohde-schwarz.com

Latin America

Phone +1-410-910-7988

customersupport.la@rohde-schwarz.com

Asia/Pacific

Phone +65 65 13 04 88

customersupport.asia@rohde-schwarz.com

China

Phone +86-800-810-8828 / +86-400-650-5896

customersupport.china@rohde-schwarz.com