

R&S®NRP-Z211/-Z221

Release Notes

Firmware Version 04.17

© 2020 Rohde & Schwarz GmbH & Co. KG
Muehldorfstr. 15, 81671 Munich, Germany
Phone: +49 89 41 29 - 0
Fax: +49 89 41 29 12 - 164
E-mail: <mailto:info@rohde-schwarz.com>
Internet: <http://www.rohde-schwarz.com>

Subject to change

R&S® is a registered trademark of Rohde & Schwarz GmbH & Co. KG. Trade names are trademarks of the owners.

1417.0473.00 | Version 04.17 | R&S®NRP-Z211/-Z221

The software makes use of several valuable open source software packages. For information, see the "Open Source Acknowledgment" provided with the product.

The following abbreviations are used throughout this document: R&S®NRP-Z211/-Z221 is abbreviated as R&S NRP-Z211/-Z221.

PAD-T-M: 3574-3288-02/03.00/C/1/1/EN

Contents

1	Information on the Current Version and History.....	3
1.1	Version 04.17.....	3
2	Firmware Update.....	4
2.1	Important Notes	4
2.2	Installation Software.....	4
2.3	Hardware and Software Requirements.....	4
2.4	Updating the Application Firmware	4
3	Customer Support	8

1 Information on the Current Version and History

1.1 Version 04.17

New Functionality

Functions
n.a.

Modified Functionality

Functions
n.a.

Improvements

Improvements
The sensor now sends always results after an init:cont on command. In some cases (SYSTEM:RUTime> 0 and sensor was IDLE for a long time) this did not work properly.
Continuous Average measurements with an activated automatic averaging never exceed the SENSE:AVERAge:COUNT:AUTO:MTIME Timeout Parameter
The sensor works now properly in NRPVs and NRP2s Freerun Mode. In some cases (trace measurement, Time/DIV < 20s) the sensor stopped measuring
In some cases it was not possible to hold a NRP2 Freerun Trace Measurement
Correct display of a Trace with TIME/DIV < 200s (video point width < sample rate)
Autotrigger Timeout (TRIGger:ATRigger:STATE is set ON)is now fixed to 300ms
Trace HiRes Measurement with multiple sweeps was also configured if TRIGger:SOURce was set to INTERNAL
Traces with 10s/DIV are displayed correct
Average Reset after sending TRIGger:DElay parameter (makes sense, if TRACe:AVERAge:TCONtrol is set to MOVing)

Known Issues

Known-Issues
n.a.

2 Firmware Update

2.1 Important Notes

This package contains the firmware for the power sensor R&S® NRP-Z211/-Z221. Each firmware update consists of one file: application firmware and boot loader are merged together. This file should be downloaded into the sensors to get the latest functionality. The firmware release 04.17 is suitable for all power sensors R&S® NRP-Z211/-Z221 already delivered. The firmware for the R&S®NRP base unit as well as the firmware for other R&S®NRP power sensors is available as a separate package.

2.2 Installation Software

Use the Firmware Update program tool from the R&S®NRP toolkit to load the new firmware for the power sensor R&S® NRP-Z211/-Z221. The toolkit is supplied on a CD-ROM together with the sensors. It is also available on the internet under <https://www.rohde-schwarz.com/software/nrp-toolkit/>.

2.3 Hardware and Software Requirements

The system requirements to perform a firmware update are as follows:

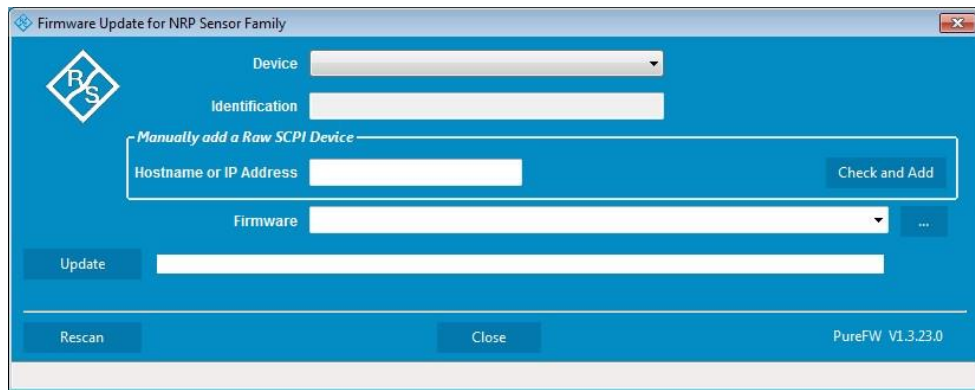
- PC with USB and either NRP-Z3, NRP-Z4 or NRP-Z5
- Operating system Windows™ 7 or Windows™ 8 or Windows™ 10
- The R&S NRP-Toolkit software must be installed on your PC. The Firmware Update is part of the NRP-Toolkit.
- A Rohde & Schwarz update file (*.nrp) for the sensor must be available.

The update files are available in <https://www.rohde-schwarz.com/firmware/nrpz211/>

2.4 Updating the Application Firmware

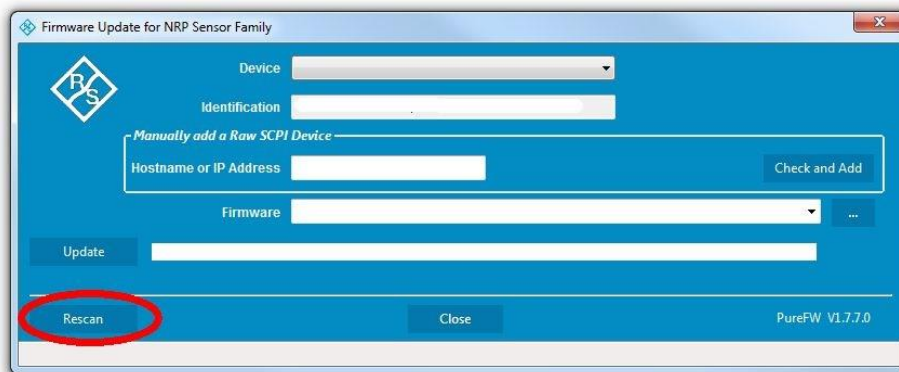
To perform a firmware update:

Start the Firmware Update program via "Start menu > NRP-Toolkit > Firmware Update". The following window should appear:

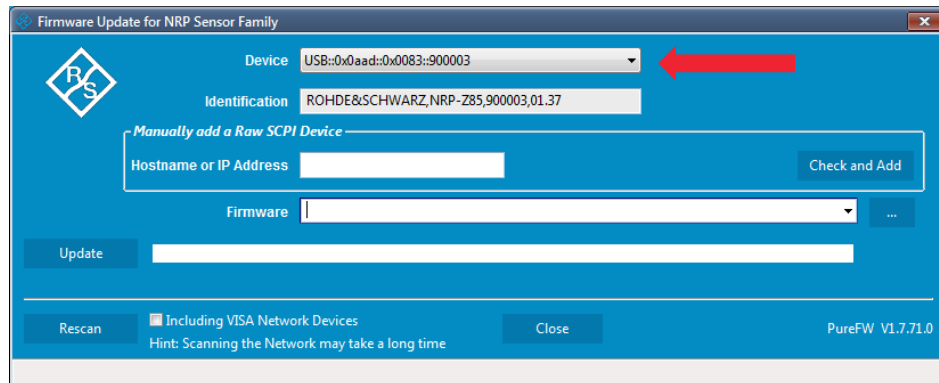


The program automatically starts scanning for R&S NRP-Zxx power sensors. When the scan is completed, all recognized power sensors are listed in the "Device" dropdown control.

If the sensor you want to update is not listed in the "Device" dropdown control, press "Rescan" to search for attached sensors.

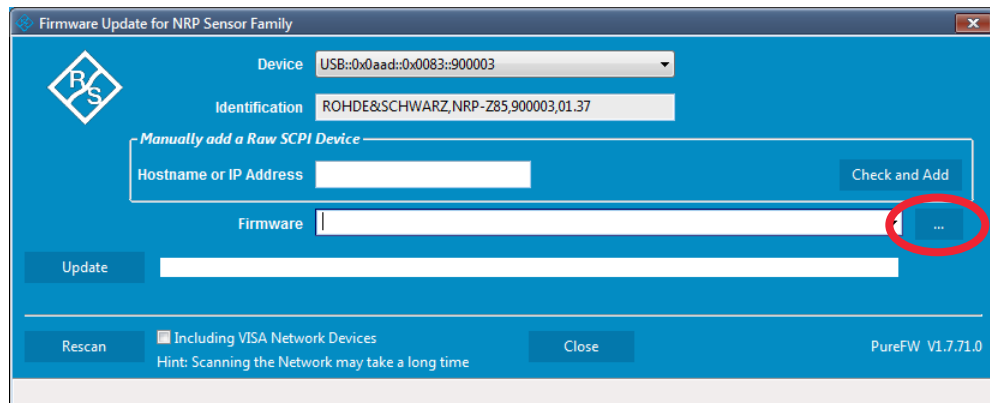


In the "Device" line select the sensor you want to update.

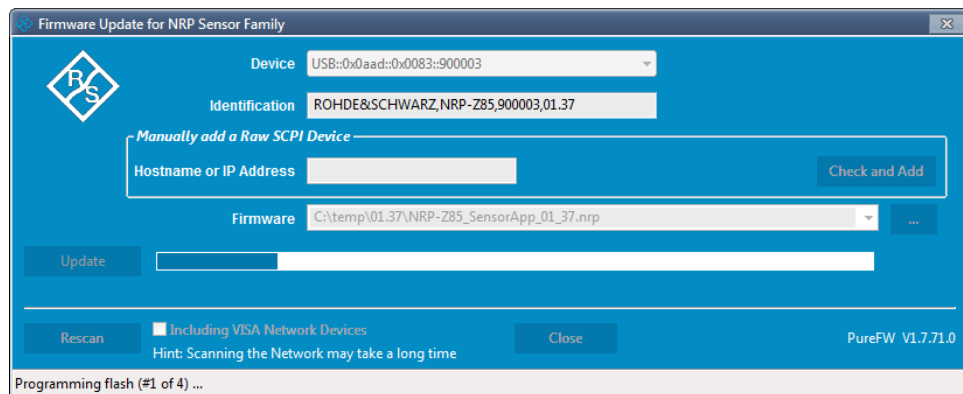


The "Hostname or IP Address" field is not used during this procedure and should therefore be left empty.

In the "Firmware" field enter the full path and file name of the update file or press the ellipsis button to browse the file system for it. New firmware for the R&S NRP-Zxx power sensors generally has an *.nrp extension.

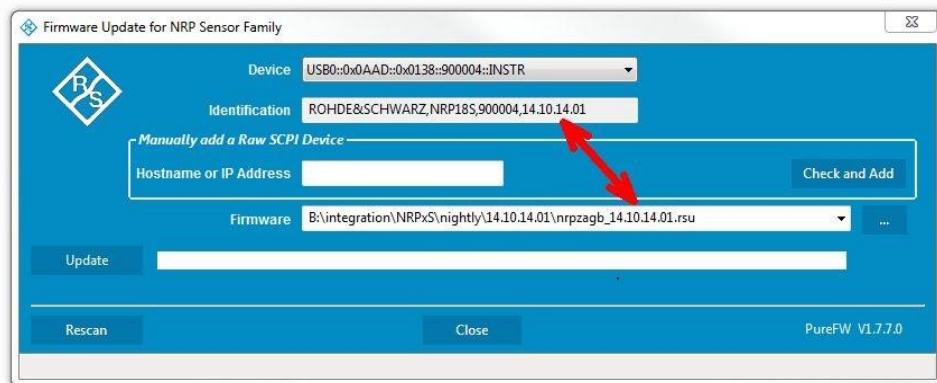


Click on the "Update" button to download the new firmware and program it into the flash memory of the sensor.



During the update process the progress is shown through a progress bar. The update sequence may take a couple of minutes, depending on the sensor model and the size of the selected file.

Check if the update was successful. This is the case if the firmware version in the "Identification" field is the same as the one you loaded in the "Firmware" field.



Potential damage to the firmware of the device

Disconnecting the power supply while an update is in progress may lead to missing or faulty firmware.

Special care must be taken on not disconnecting the power supply while the update is in progress. Interrupting the power supply during the firmware update will most likely lead to an unusable device which needs to be sent in for maintenance.

3 Customer Support

Technical support – where and when you need it

For quick, expert help with any Rohde & Schwarz equipment, contact one of our Customer Support Centers. A team of highly qualified engineers provides telephone support and will work with you to find a solution to your query on any aspect of the operation, programming or applications of Rohde & Schwarz equipment.

Up-to-date information and upgrades

To keep your instrument up-to-date and to be informed about new application notes related to your instrument, please send an e-mail to the Customer Support Center stating your instrument and your wish. We will take care that you will get the right information.

Europe, Africa, Middle East

Phone +49 89 4129 12345

customersupport@rohde-schwarz.com

North America

Phone 1-888-TEST-RSA (1-888-837-8772)

customer.support@rsa.rohde-schwarz.com

Latin America

Phone +1-410-910-7988

customersupport.la@rohde-schwarz.com

Asia/Pacific

Phone +65 65 13 04 88

customersupport.asia@rohde-schwarz.com

China

Phone +86-800-810-8828 / +86-400-650-5896

customersupport.china@rohde-schwarz.com