



ROHDE & SCHWARZ

Test and Measurement
Division

Release Notes

International Keyboards

for R&S Spectrum Analyzer/ Signal Analyzer

➤	R&S FSVA(Win7 / Win10)	1321.3008.xx
➤	R&S FSV(Win7 / Win10)	1321.3008.xx
➤	R&S FSV(XP)	1307.9002.xx
➤	R&S FSL(XP)	1300.2502.xx
➤	R&S FSP(XP)	1164.4391.xx
➤	R&S FSU(XP)	1166.1660.xx
➤	R&S FSQ(XP)	1155.5001.xx
➤	R&S FSG(XP)	1309.0002.xx
➤	R&S FMU(XP)	1303.3500.02

New Features:

- Installation of the German, Spanish, French, Italian and Portuguese keyboard support

Release Note Revision: 5

Contents

History	2
General Topics	2
Installation of the international keyboard support for Windows XP.....	2
International keyboard support for Windows 7	5
International keyboard support for Windows 10	8
Known Problems	10

History

Date	Rel Note Rev	Changes
02.05.2007	1	First revision
21.05.2008	2	Pictures and instrument R&S FSG added.
22.08.2011	3	Instrument R&S FSV added.
28.09.2016	4	Instrument R&S FSVA added.
22.05.2017	5	Windows 10 added.

General Topics

This update will enhance the embedded XP operating system of the following keyboard layouts:

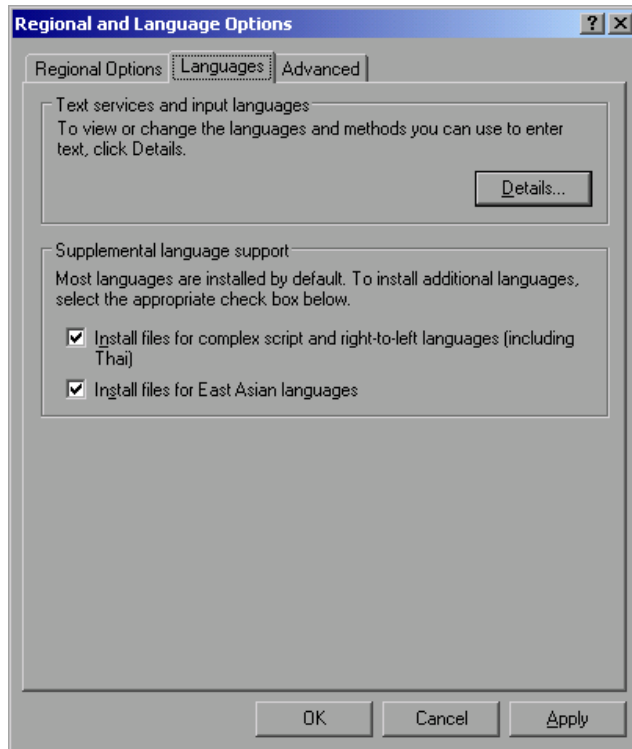
- German Keyboards
- Spanish Keyboards
- French Keyboards
- Italian Keyboards
- Portuguese Keyboards

Installation of the international keyboard support for Windows XP

For the installation of the German keyboard support, proceed with the following steps:

- 1) Copy the file **FsxInternationalKeyboards.msi** onto USB stick for floppy disk.
- 2) Connect keyboard and mouse to the analyzer.
- 3) Switch the analyzer on and wait until the boot process is finished.
- 4) Terminate the analyzer firmware by pressing <ALT> <F4>.
- 5) Start Windows Explorer
- 6) Start the installation procedure with double click onto the file **FsxInternationalKeyboards.msi**.
- 7) Reboot the analyzer.
- 8) Now open the windows start menu by pressing the windows key or <CTRL> <ESC>.

9) Select *Settings - Control Panel - Regional and Language Options - Languages*.

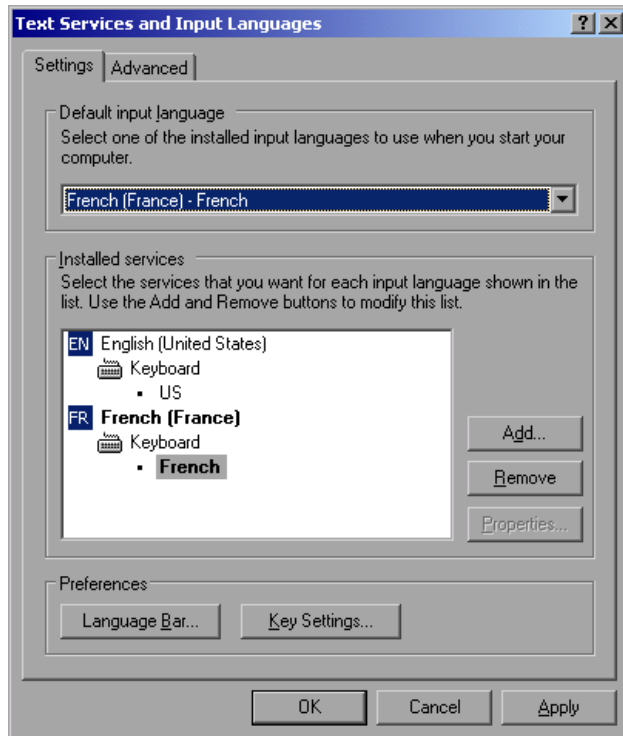


10) Select *Details*.



11) Select *Add*, choose one of the available input languages and confirm with OK and the dialog will be close.

12) Now change the *Default input language* as needed and close all open dialogs with OK.

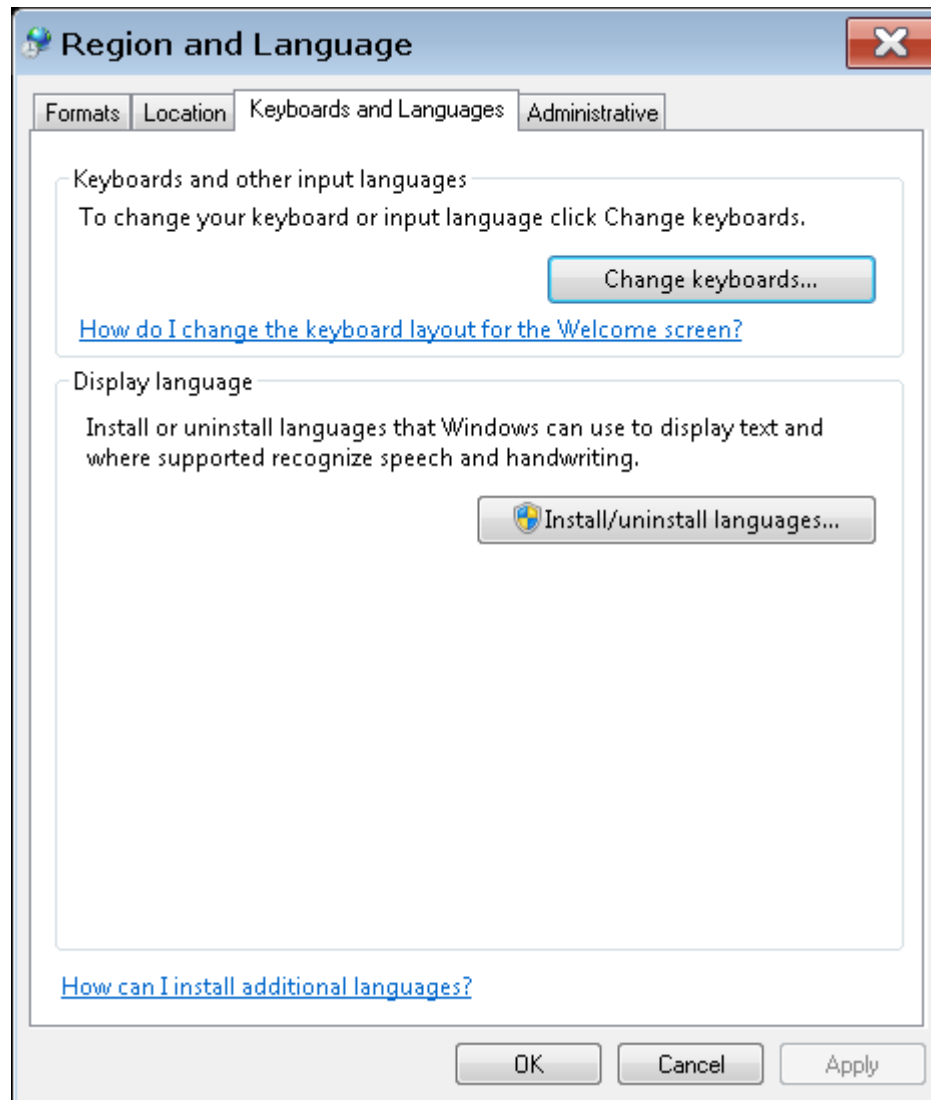


13) Reboot the analyzer.

International keyboard support for Windows 7

For the installation of the German keyboard support, proceed with the following steps:

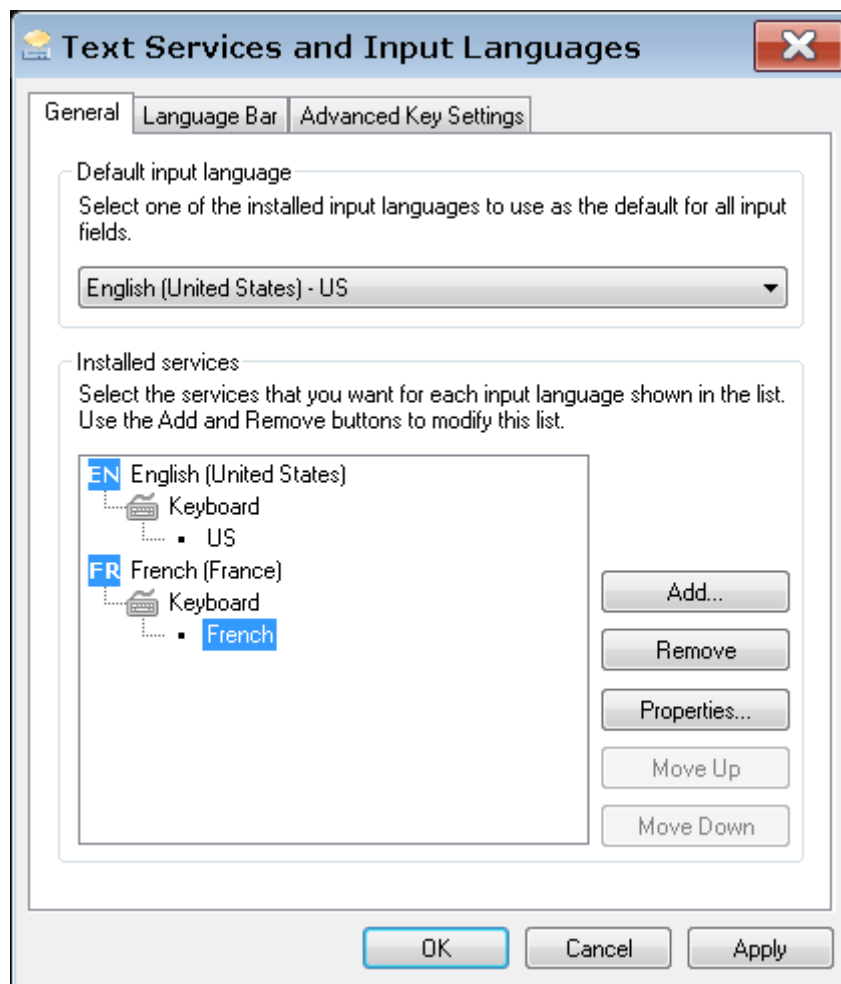
- 1) Select *Control Panel – Clock, Language and Regions – Change Keyboard or other input methods*



- 2) Select *Change keyboards...*



- 3) Select *Add*, choose one of the available input languages and confirm with *OK* and the dialog will be close.

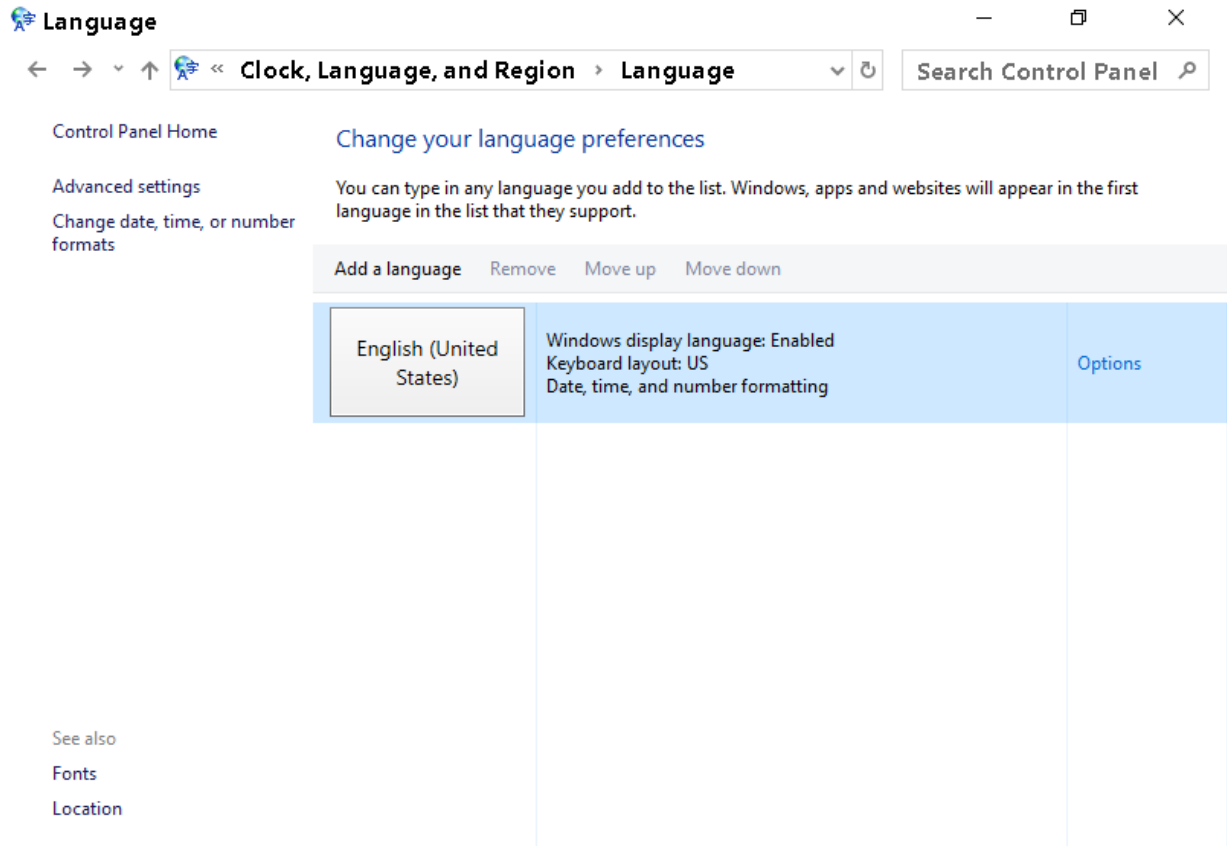


- 4) Now change the *Default input language* as needed and close all open dialogs with OK.
- 5) Reboot the analyzer.

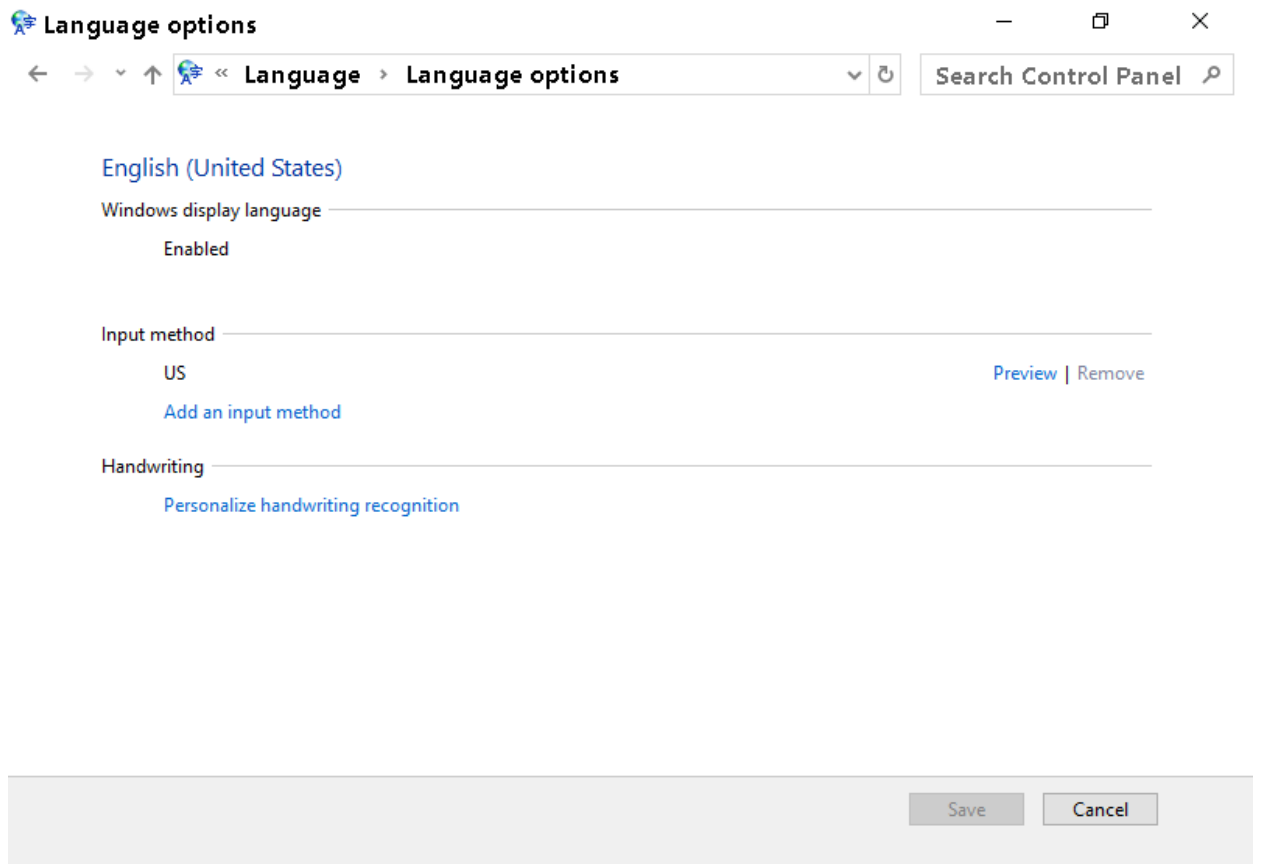
International keyboard support for Windows 10

For the installation of the German keyboard support, proceed with the following steps:

- 1) Select *Control Panel – Clock, Language, and Region – Change input methods*

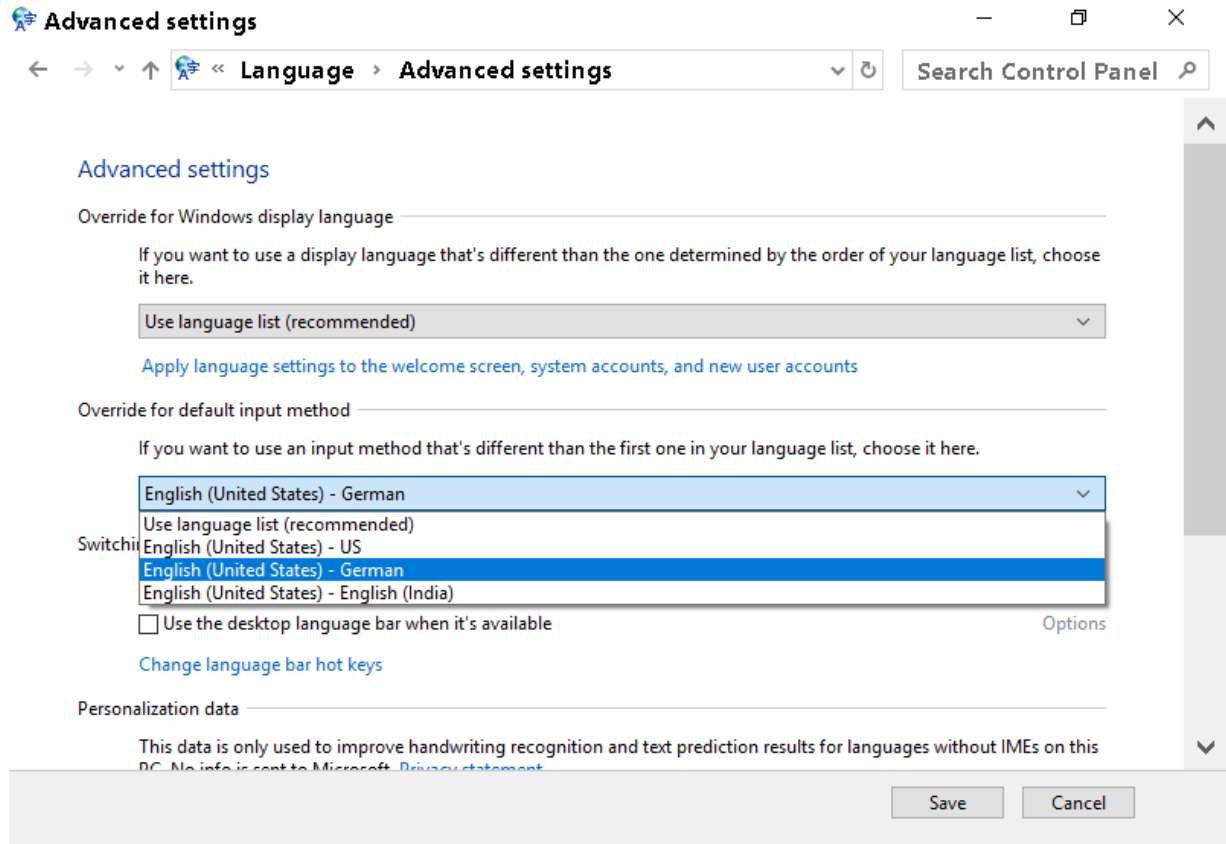


- 2) Select *Options*.



- 3) Select *Add an input method*, choose one of the available input languages, confirm with ADD and close the dialog with SAVE.

- 4) Select *Advanced Settings*.



- 5) Now change *Override for default input method* as needed and close the dialog with SAVE.
- 6) Reboot the analyzer.

Known Problems

For FSP/FSU/FSQ: A base system firmware 4.3x (for FSG: V4.39 SP1) or newer is required to support the international keyboard driver. In older versions some of the front panel keys will not work properly.

For FSV: A base system Firmware 1.61Sp2 or newer is required to support the international keyboard driver. In older versions some of the front panel keys will not work properly