

# How to Apply MS17-10 to prevent WannaCrypt Attacks

For Signal Generators and Audio Analyzers

Document date: 2017-06-02

This document describes the procedure how to apply the Microsoft patches to R&S devices running Windows XP or Win7 operating systems in order to prevent WannaCrypt Attacks.

Please refer to the Microsoft article “Customer Guidance for WannaCrypt attacks” (<https://blogs.technet.microsoft.com/msrc/2017/05/12/customer-guidance-for-wannacrypt-attacks/>) for more details.

## Contents

1	Check Applicable Instruments.....	2
2	Prepare Memory Stick .....	2
3	Determine the operating system .....	3
4	Apply the correct patch .....	3
4.1	<b>Windows 7 .....</b>	<b>3</b>
4.2	<b>Windows XP.....</b>	<b>4</b>
4.3	<b>Possible error messages during installation of the Patch .....</b>	<b>5</b>
5	Customer Support.....	6

# 1 Check Applicable Instruments

The following table shows an overview of applicable instruments and the possible operating systems.

Device	Windows XP SP2	Windows XP SP3	Windows XP Embedded SP3	Windows Embedded 7 32-bit
<b>Needed action</b>	Install SP3 and Patch MS17_010	Install Patch MS17_010	Install Patch MS17_010	Install Patch MS17_010
SMU200A	X	X	X	
SMJ100A	X	X	X	
SMATE200A	X	X	X	
AMU200A	X	X	X	
AFQ100A	X	X	X	
AFQ100B	X	X	X	
BTC				X
SFE	X	X	X	
SFE100	X	X	X	
SFC	X	X	X	
SFU	X	X	X	
UPV	X	X	X	X
UPP		X	X	X

If your instrument is running **Windows XP SP2**, the patch cannot be installed without upgrading to SP3. SP3 can be downloaded by following this link:

[http://download.windowsupdate.com/msdownload/update/software/svpk/2008/04/windowsxp-kb936929-sp3-x86-enu\\_c81472f7eeea2eca421e116cd4c03e2300ebfde4.exe](http://download.windowsupdate.com/msdownload/update/software/svpk/2008/04/windowsxp-kb936929-sp3-x86-enu_c81472f7eeea2eca421e116cd4c03e2300ebfde4.exe)





**No action** is required if under the list of installed updates (see also final verifications in Chapter 4):

- Windows XP devices list the KB4012598
- Windows 7 devices list the KB4012215

# 2 Prepare Memory Stick

Download the File MS17\_010\_Patch\_WinXP\_Win7.zip from the R&S website and extract it **INCLUDING** the subfolders on a USB memory stick.

The folder structure should look like this:

 Windows Embedded Standard 7 32 bit	16.05.2017 10:15
 Windows Embedded Standard 7 64 bit	16.05.2017 10:15
 Windows XP Embedded SP3 x86	16.05.2017 10:15
 Windows XP SP3 x86	16.05.2017 10:15

Each folder includes a specific patch for a specific operating system.

## 3 Determine the operating system

During startup of the instrument, it shows “Windows XP” or “Windows Embedded Standard 7”.

## 4 Apply the correct patch

### 4.1 Windows 7

Please go to the folder on you USB memory stick which corresponds to you version of Windows 7.

- 32-bit: MS17\_010\_Patch\_WinXP\_Win7\Windows Embedded Standard 7 32 bit\

Double Click on the File “InstallPatch.cmd”

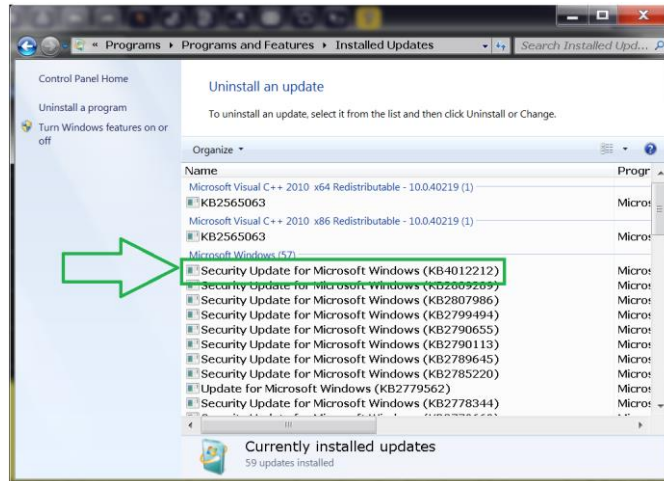


Windows will open a command box. Please wait, the process can take some time.  
A successful installation will then look like this:

```
C:\Windows\system32\cmd.exe
D:\FSW\DontVannaCry\Windows Embedded Standard 7 32 bit>call dism /online /add-package /packagepath:c:\Temp\Windows6.1-KB4012212-x86.cab /norestart
Deployment Image Servicing and Management tool
Version: 6.1.7600.16385
Image Version: 6.1.7601.17514
Processing 1 of 1 - Adding package Package_for_KB4012212~31bf3856ad364e35~x86~~6.1.1.0
[=====100.0%=====]
The operation completed successfully.
D:\FSW\DontVannaCry\Windows Embedded Standard 7 32 bit>del c:\Temp\Windows6.1-KB4012212-x86.cab
D:\FSW\DontVannaCry\Windows Embedded Standard 7 32 bit>del c:\Temp\Windows6.1-KB4012212-x86.xml
D:\FSW\DontVannaCry\Windows Embedded Standard 7 32 bit>del c:\Temp\Windows6.1-KB4012212-x86-pkgProperties.txt
D:\FSW\DontVannaCry\Windows Embedded Standard 7 32 bit>del c:\Temp\WSUSSCAN.cab
Press any key to continue . . . _
```

After pressing any key, the device will automatically restart and will perform the update. Please wait until the update and further reboots are done.

A final verification is possible within the Installed Updates Dialog in Windows.  
“Control Panel”-> “Programs and features” -> “Installed Updates”



## 4.2 Windows XP

Our instruments exist with two variations of windows XP.

You will have to try both patches in order to ensure that the fix is applied correctly.

The patches for windows XP can be found on your USB memory stick in the following two folders:

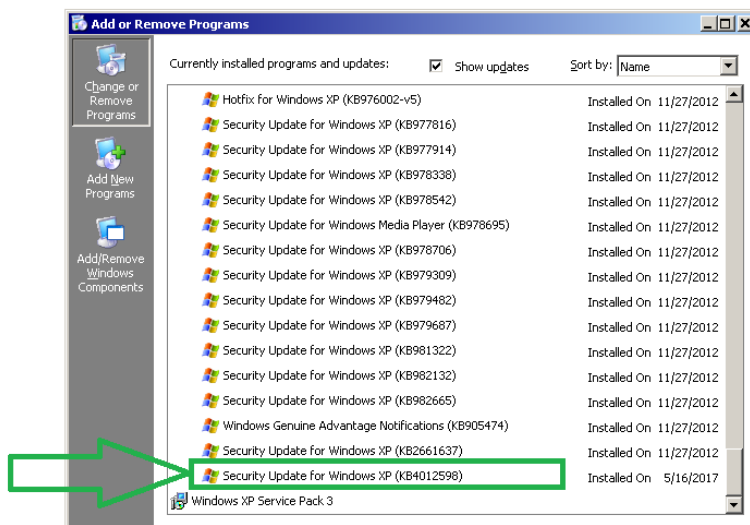
- MS17\_010\_Patch\_WinXP\_Win7\Windows XP Embedded SP3 x86\
- MS17\_010\_Patch\_WinXP\_Win7\Windows XP SP3 x86\

Please go into each folder and double click on the File "InstallPatch.cmd"



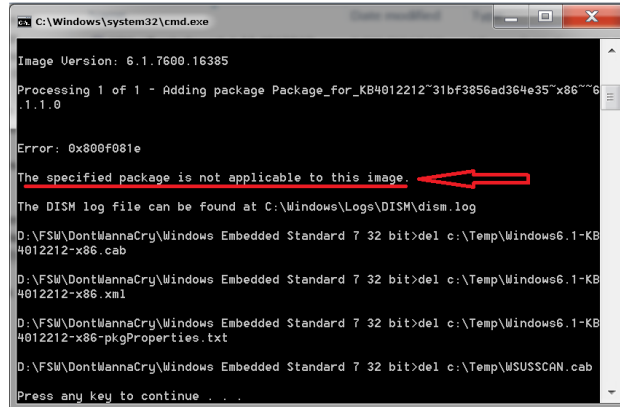
Windows will open a command box. Please wait, the process can take some time.

You can check if the update was applied correctly within the "Add or Remove Programs" dialog of windows XP.

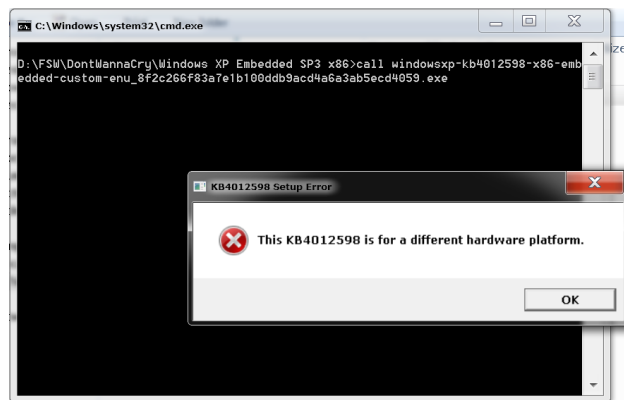


### 4.3 Possible error messages during installation of the Patch

- Installation of the wrong Windows 7 patch. For example the 32-bit package on the 64-bit Windows 7



- Installation of the Windows XP patch on windows 7



# 5 Customer Support

## **Technical support – where and when you need it**

For quick, expert help with any Rohde & Schwarz equipment, contact one of our Customer Support Centers. A team of highly qualified engineers provides telephone support and will work with you to find a solution to your query on any aspect of the operation, programming or applications of Rohde & Schwarz equipment.

## **Up-to-date information and upgrades**

To keep your instrument up-to-date and to be informed about new application notes related to your instrument, please send an e-mail to the Customer Support Center stating your instrument and your wish. We will take care that you will get the right information.

### **Europe, Africa, Middle East**

Phone +49 89 4129 12345

[customersupport@rohde-schwarz.com](mailto:customersupport@rohde-schwarz.com)

### **North America**

Phone 1-888-TEST-RSA (1-888-837-8772)

[customer.support@rsa.rohde-schwarz.com](mailto:customer.support@rsa.rohde-schwarz.com)

### **Latin America**

Phone +1-410-910-7988

[customersupport.la@rohde-schwarz.com](mailto:customersupport.la@rohde-schwarz.com)

### **Asia/Pacific**

Phone +65 65 13 04 88

[customersupport.asia@rohde-schwarz.com](mailto:customersupport.asia@rohde-schwarz.com)

### **China**

Phone +86-800-810-8828 / +86-400-650-5896

[customersupport.china@rohde-schwarz.com](mailto:customersupport.china@rohde-schwarz.com)