

# IVI-C driver history for the R&S® Spectrum Analyzers Driver Documentation

## Products:

| R&S® FSW



| R&S® FSVA



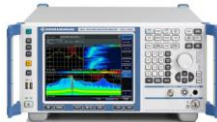
| R&S® FSV



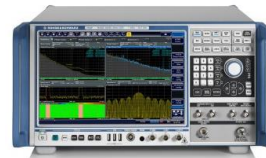
| R&S® FPS



| R&S® FSVR



| R&S® FSWP



Driver history for IVI-C

# Table of Contents

<b>2</b>	<b>Supported Instruments.....</b>	<b>3</b>
<b>3</b>	<b>Getting Started .....</b>	<b>4</b>
<b>3.1</b>	<b>Files placement for 32-bit operating system: .....</b>	<b>5</b>
<b>3.2</b>	<b>Files placement for 64-bit operating system: .....</b>	<b>6</b>
<b>3.3</b>	<b>Preconditions: .....</b>	<b>6</b>
<b>4</b>	<b>IVI-C History.....</b>	<b>7</b>

## 2 Supported Instruments

In the following table the supported R&S instruments and firmware versions are listed:

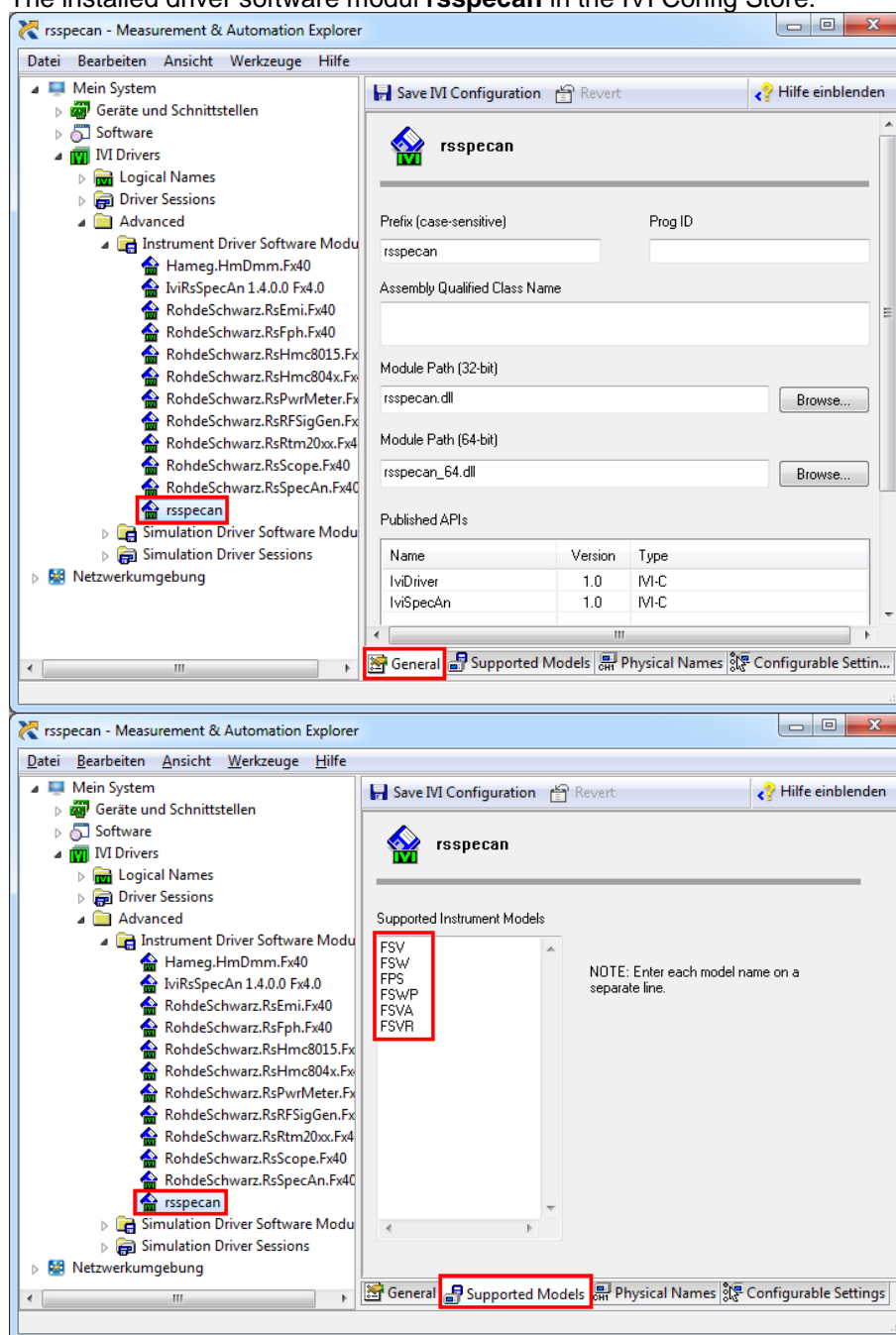
<b>Which instruments are supported?</b>		
<b>Current revision of instrument driver supports these instruments and firmware versions:</b>		
<b>Instrument</b>	<b>Supported Firmware</b>	<b>Remarks</b>
FSW	2.10 or later	
FSV	3.20 or later	
FSVR	1.63 or later	
FPS	1.20 or later	
FSVA	3.20 or later	
FSWP	1.40 or later	

## 3 Getting Started

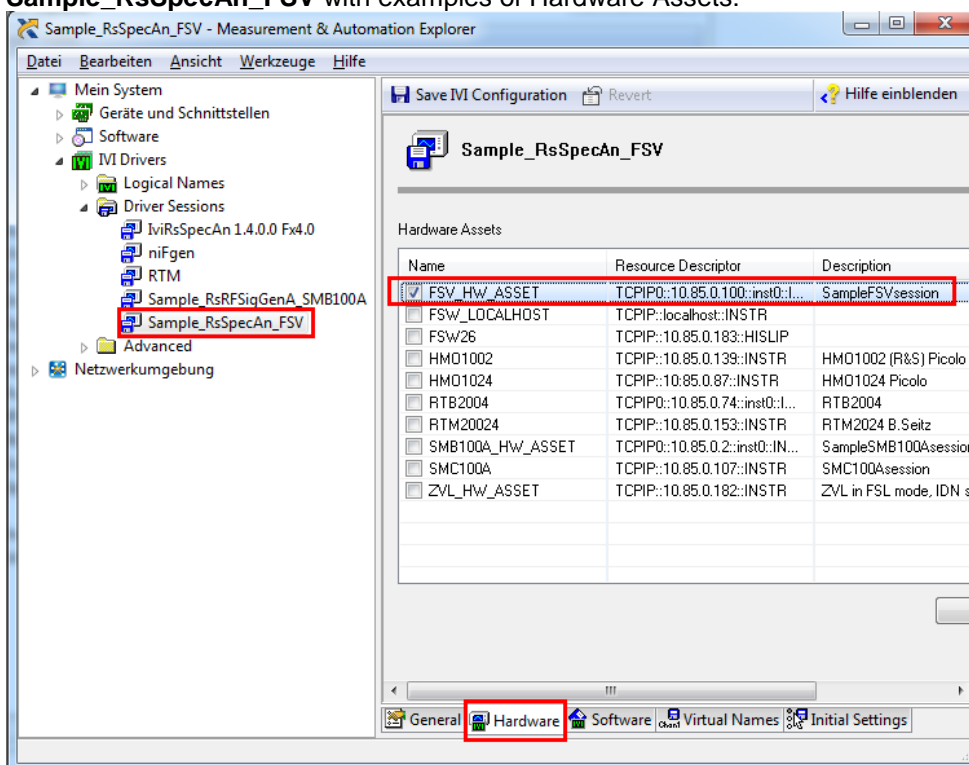
The Rohde & Schwarz rspecan IVI-C Instrument driver offers only the IviSpecAn-compliant interface. Please note, that the 64bit installer installs both 64bit and 32bit versions of the driver. Use the IviSpecan interface to take advantage of the rspecan IVI driver interchangeability feature.

Refer to examples **IviSpecAn C / CVI / C++ Examples** for practical use of the driver.

The installed driver software modul **rspecan** in the IVI Config Store:



The installer also creates an IVI Config Store Driver Session called **Sample\_RsSpecAn\_FSV** with examples of Hardware Assets:



### 3.1 Files placement for 32-bit operating system:

Source files:

c:\Program Files\IVI Foundation\IVI\Drivers\rsspecan\rsspecan.c  
 c:\Program Files\IVI Foundation\IVI\Drivers\rsspecan\rsspecan.fp  
 c:\Program Files\IVI Foundation\IVI\Drivers\rsspecan\rsspecan.sub  
 c:\Program Files\IVI Foundation\IVI\Include\rsspecan.h

Compliance file:

c:\Program Files\IVI Foundation\IVI\Drivers\rsspecan\rsspecan.txt

dll file:

c:\Program Files\IVI Foundation\IVI\Bin\rsspecan.dll

lib file:

c:\Program Files\IVI Foundation\IVI\Lib\msc\rsspecan.lib

## 3.2 Files placement for 64-bit operating system:

Source files

**c:\Program Files\IVI Foundation\IVI\Drivers\rsspecan\rsspecan.c**  
**c:\Program Files\IVI Foundation\IVI\Drivers\rsspecan\rsspecan.fp**  
**c:\Program Files\IVI Foundation\IVI\Drivers\rsspecan\rsspecan.sub**  
**c:\Program Files\IVI Foundation\IVI\Include\rsspecan.h**

**c:\Program Files (x86)\IVI Foundation\IVI\Drivers\rsspecan\rsspecan.c**  
**c:\Program Files (x86)\IVI Foundation\IVI\Drivers\rsspecan\rsspecan.fp**  
**c:\Program Files (x86)\IVI Foundation\IVI\Drivers\rsspecan\rsspecan.sub**  
**c:\Program Files (x86)\IVI Foundation\IVI\Include\rsspecan.h**

Compliance files:

**c:\Program Files\IVI Foundation\IVI\Drivers\rsspecan\rsspecan.txt**  
**c:\Program Files (x86)\IVI Foundation\IVI\Drivers\rsspecan\rsspecan.txt**

dll files:

**c:\Program Files\IVI Foundation\IVI\Bin\rsspecan\_64.dll**  
**c:\Program Files (x86)\IVI Foundation\IVI\Bin\rsspecan.dll**

lib files:

**c:\Program Files (x86)\IVI Foundation\IVI\Lib\_x64\msc\rsspecan\_64.lib**  
**c:\Program Files (x86)\IVI Foundation\IVI\Lib\msc\rsspecan.lib**

## 3.3 Preconditions:

- IVI Compliance package 4.1 or later
- VISA 4.6 or later

Please find more information and resources on <http://www.ivifoundation.org/>

## 4 IVI-C History

rsspecan Instrument Driver		
Driver history for IVI-C		
Revision	Date	Note
2.0.1	01/2017	<p>* Version 2.0.1:</p> <ul style="list-style-type: none"> <li>* - Fixed rsspecan_ConfigureMarkerEnabled when switching the marker OFF did not properly switched the marker OFF</li> </ul>
2.0	01/2017	<p>Version 2.0:</p> <ul style="list-style-type: none"> <li>- The attribute <b>IVISPECAN_ATTR_SWEEP_MODE_CONTINUOUS</b> is set to <b>VI_FALSE</b> during the session initialization. This makes the Spectrum Analyzer to be in single sweep</li> <li>- Added FSVA to the list of supported instruments</li> <li>- Fixed flags for attributes where no chaching is desired by setting <b>IVI_VAL_NEVER_CACHE</b></li> <li>- Fixed rsspecan_error_message</li> <li>- Changed rsspecan_error_query to read out all the error queue entries (syst:err?)</li> <li>- added rsspecan_ClearBeforeRead() - with the same method as in the VXIpnv rsspecan 3.8.0</li> <li>- rsspecan_WaitForOPCCallback copied from rsspecan 3.8.0</li> <li>- Added all 16 markers to the installer Sample_RsSpecAn_FSV device session</li> </ul>
1.2	10/2015	Added support for FSWP
1.1	06/2015	<p>Fixed:</p> <p>Waiting for OPC procedure ( rsspecan_WaitForOPCCallback):</p> <p>Fixed false error repors by the function</p> <p>The delay between 2 viReadSTB calls adapts:</p> <ul style="list-style-type: none"> <li>- For the first 100ms, no delay is applied</li> <li>- Up to 1 second a 10ms delay is applied</li> <li>- Above 1 second a 100ms delay is applied</li> </ul> <p>Modified:</p> <ul style="list-style-type: none"> <li>- The Installer adds also Physical names to the instrument driver software module in IVI Configuration Store.</li> </ul>
1.0	06/2015	Initial release

### **About Rohde & Schwarz**

Rohde & Schwarz is an independent group of companies specializing in electronics. It is a leading supplier of solutions in the fields of test and measurement, broadcasting, radiomonitoring and radiolocation, as well as secure communications. Established more than 80 years ago, Rohde & Schwarz has a global presence and a dedicated service network in over 70 countries. Company headquarters are in Munich, Germany.

### **Environmental commitment**

- Energy-efficient products
- Continuous improvement in environmental sustainability
- ISO 14001-certified environmental management system



### **Regional contact**

Europe, Africa, Middle East

+49 89 4129 12345

[customersupport@rohde-schwarz.com](mailto:customersupport@rohde-schwarz.com)

North America

1-888-TEST-RSA (1-888-837-8772)

[customer.support@rsa.rohde-schwarz.com](mailto:customer.support@rsa.rohde-schwarz.com)

Latin America

+1-410-910-7988

[customersupport.la@rohde-schwarz.com](mailto:customersupport.la@rohde-schwarz.com)

Asia/Pacific

+65 65 13 04 88

[customersupport.asia@rohde-schwarz.com](mailto:customersupport.asia@rohde-schwarz.com)

R&S® is a registered trademark of Rohde & Schwarz GmbH & Co. KG; Trade names are trademarks of the owners.

**Rohde & Schwarz GmbH & Co. KG**

Mühl Dorfstraße 15 | D - 81671 München

Phone + 49 89 4129 - 0 | Fax + 49 89 4129 - 13777

[www.rohde-schwarz.com](http://www.rohde-schwarz.com)