

R&S® TSMA

Autonomous Mobile Network Scanner Supplement Driver Update



1178.3934.02 – 01-DRAFT

1 R&S TSMA Driver Update



- The package "R&S TSMA ThinkPad USB LAN Setup 1.00" is required to extend the R&S TSMA with an additional Scanner LAN port for MIMO LTE operation.
- The packages "R&S TSMA Samsung Android USB Setup 1.00" and "R&S TSMA Qualcomm Driver Setup 1.00" are the R&S ROMES/NORA mobile device drivers, which are needed when a Samsung test-mobile is connected to the R&S TSMA.

1.1 Installation MIMO Extension



For the installation of the driver update package "R&S TSMA ThinkPad USB LAN Setup 1.00", the R&S TSPC-U2L USB 3.0 to LAN Adapter (3593.8430.02) must be connected to the R&S TSMA.

1. Connect a Samsung test-mobile device to the R&S TSMA USB port.
2. Download the `T SMA_DriverUpdate_1.00.exe` file from the Rohde & Schwarz web site and run it.

The "R&S Software Distribution" welcome to install page opens.

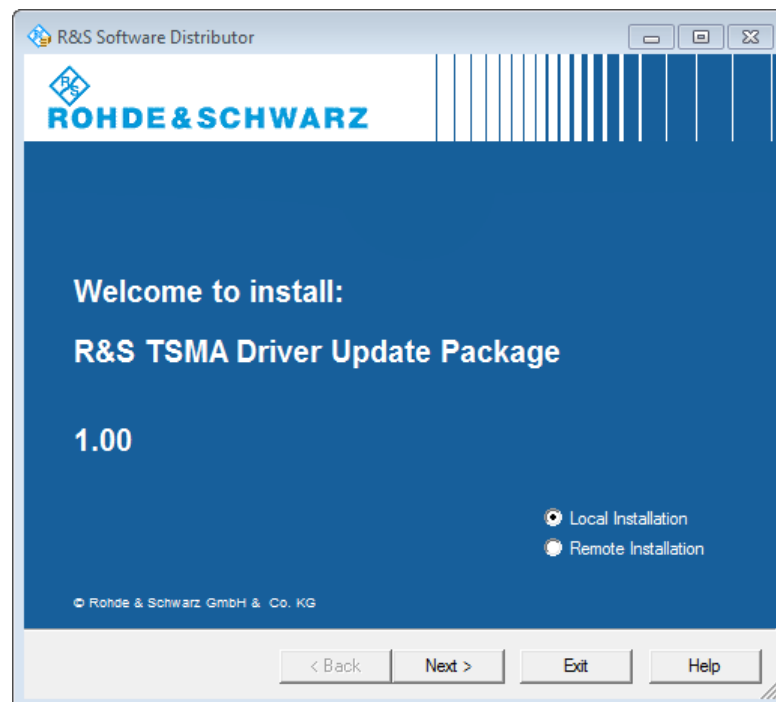


Figure 1-1: R&S Software Distributor opening page

3. Select "Local Installation" and click "Next".

The opened page shows the contents of the "R&S TSMA Driver Update Package 1.00".

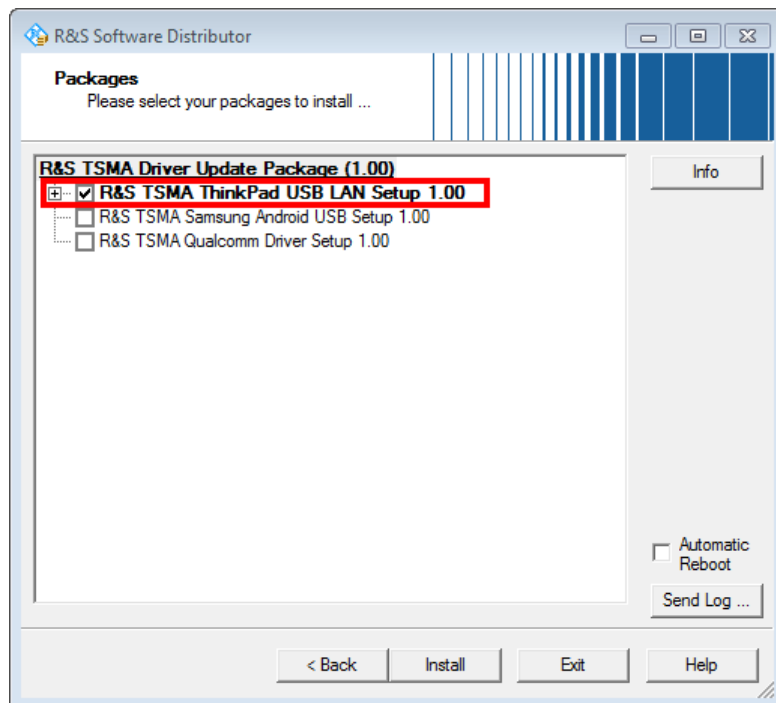


Figure 1-2: Contents of the R&S TSMA Driver Update Package

4. Select the "R&S TSMA ThinkPad USB LAN Setup 1.00" entry and click "Install".
5. Close the installation.

The tool installs the required package and assigns the 192.168.2.1 IPv4 address to Ethernet adapter automatically.

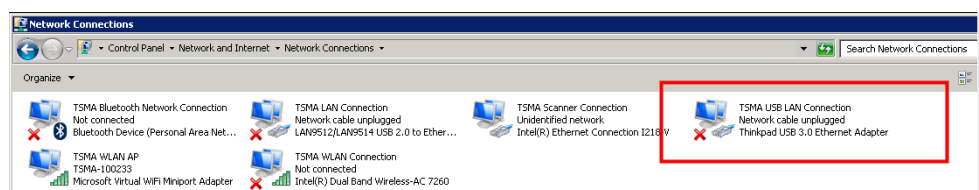


Figure 1-3: Installed package

The R&S TSME IP address has to be set to 192.168.2.x in order to support the R&S TSMA MIMO measurements.

How to change the address: see "R&S TSME Ultra Compact Drive Test Scanner User Manual" version 06, chapter 4.3.

1.2 Installation ROMES/NORA Mobile Device Drivers



Install the mobile device drivers before connecting a test mobile!

1. Download the `TSMA_DriverUpdate_1.00.exe` file from the Rohde & Schwarz web site and run it.

The "R&S Software Distribution" welcome to install page opens.

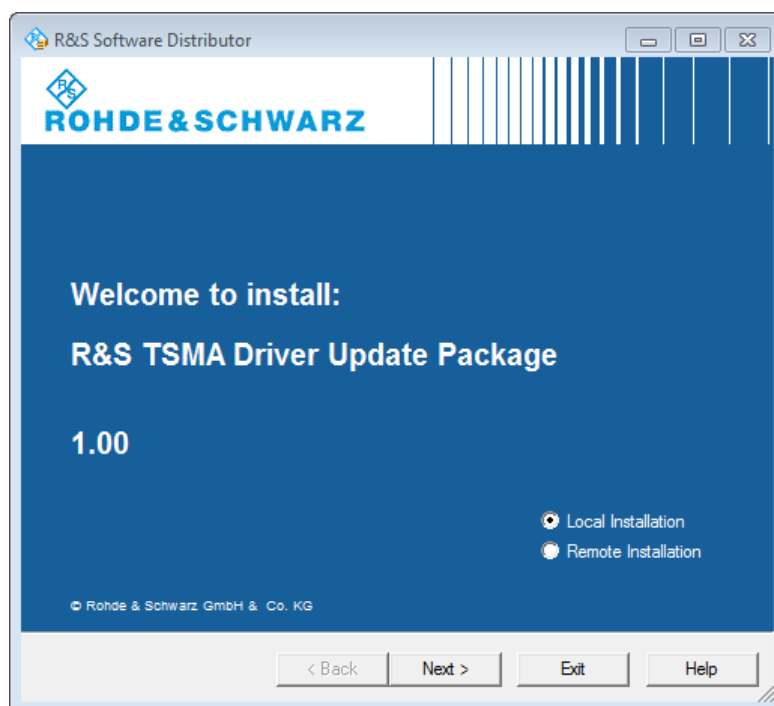


Figure 1-4: R&S Software Distributor opening page

2. Select "Local Installation" and click "Next".

The opened page shows the contents of the "R&S TSMA Driver Update Package 1.00".

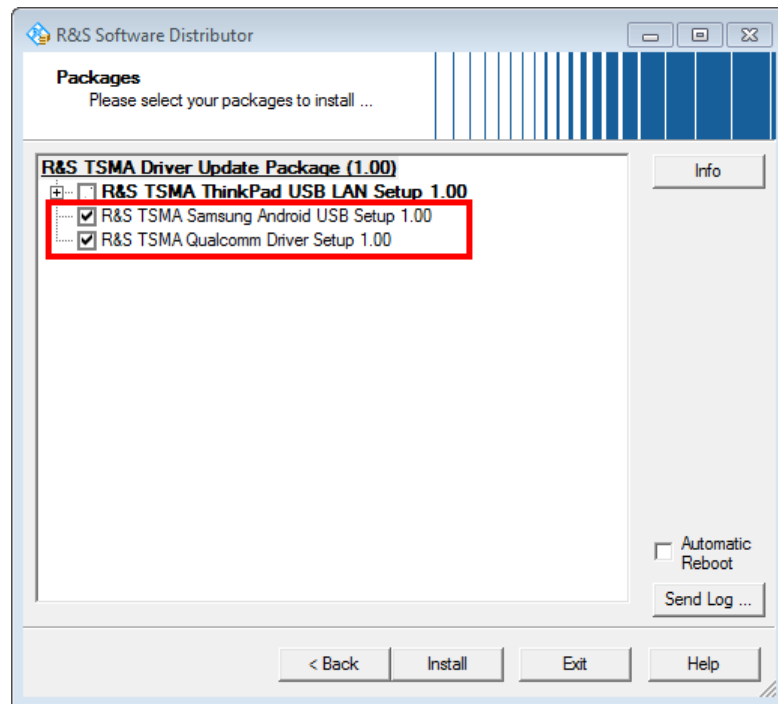


Figure 1-5: Contents of the R&S TSMA Driver Update Package

3. Select "R&S TSMA Samsung Android USB Setup 1.00" and "R&S TSMA Qualcomm Driver Setup 1.00" and click "Install".
4. Close the installation.

The tool installs the required packages.

For more, see `ROMES UE Application.pdf` included in the delivered R&S ROMES DVD.

© 2016 Rohde & Schwarz GmbH & Co. KG
Mühldorfstr. 15, 81671 München, Germany
Phone: +49 89 41 29 - 0
Fax: +49 89 41 29 12 164
Email: info@rohde-schwarz.com
Internet: www.rohde-schwarz.com

Subject to change – Data without tolerance limits is not binding.

R&S® is a registered trademark of Rohde & Schwarz GmbH & Co. KG.

Trade names are trademarks of the owners.

Throughout this manual, products from Rohde & Schwarz are indicated without the ® symbol, e.g. R&S®TSMA is indicated as R&S TSMA.