

# R&S® TRUSTED OBJECTS MANAGER NE

## Specifications

### Description

R&S®Trusted Objects Manager is the central management appliance for Rohde & Schwarz Cybersecurity products.

The management system allows central and easy-to-use administration of Rohde & Schwarz Cybersecurity products. The NE version is optimized and foreseen to manage the network encryption products especially the R&S®SITLine NG series. The client server architecture fulfills high security requirements, thus among other the option of user 2-factor-authentication at client site based on SmartCard. R&S®Trusted Objects Manager NE represents the CA for all security devices in operation.

Reliable and fail-safe operation can be assured by connecting one or more additional R&S®Trusted Objects Managers NE as standby instances.

### Technical specifications

R&S®Trusted Objects Manager	
CPU	1 x Intel Xeon E5-2620 v4 @ 2,1GHz, 8 physical CPU cores with AES New Instructions (AES-NI)
RAM	16 GB
HDD	2 x 1TB SATA in RAID 1 mode
Ethernet interfaces	2 x GigE
TPM	TPM specification 1.2, EAL4+ certified
Dimensions	19" Rack mount 4.32 x 43.47 x 74.67 cm
Power supply	2 x 500 W (redundant)
Operating temperature	<ul style="list-style-type: none"><li>• 10 °C to 35 °C (50 °F to 95 °F) at sea level with an altitude derating of 1.0 °C per every 305 m (1.8 °F per every 1000 ft) above sea level to a maximum of 3050 m (10,000 ft), no direct sustained sunlight.</li><li>• Maximum rate of change is 20 °C/h (36 °F/h)</li></ul>
Operating humidity	<ul style="list-style-type: none"><li>• Minimum to be the higher (more moisture) of -12 °C (10.4 °F) dew point or 8 % relative humidity.</li><li>• Maximum to be the lower (less moisture) of 24 °C (75.2 °F) dew point or 90 % relative humidity</li></ul>
Power consumption	<ul style="list-style-type: none"><li>• Max 120VA on the AC power socket</li><li>• Average 60-80 VA on the AC power socket</li></ul>
Heat loss	<ul style="list-style-type: none"><li>• Ca. 204-273 BTU/h</li><li>• Max. 410 BTU/h</li></ul>

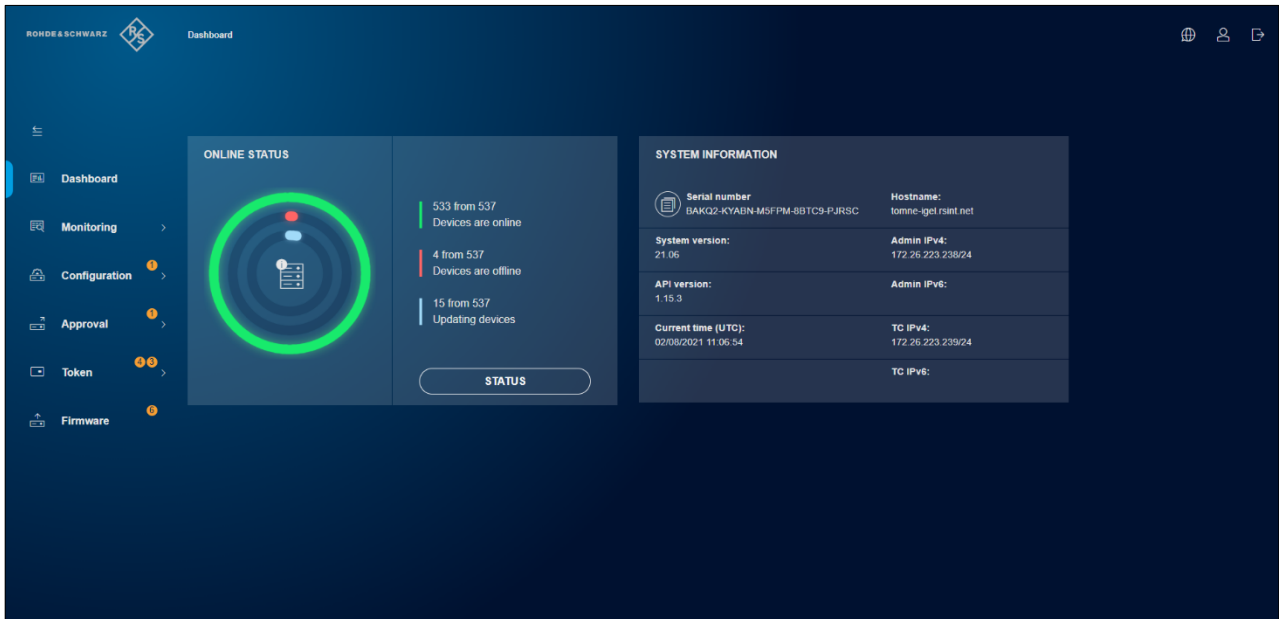


Data sheet | Version 01.00

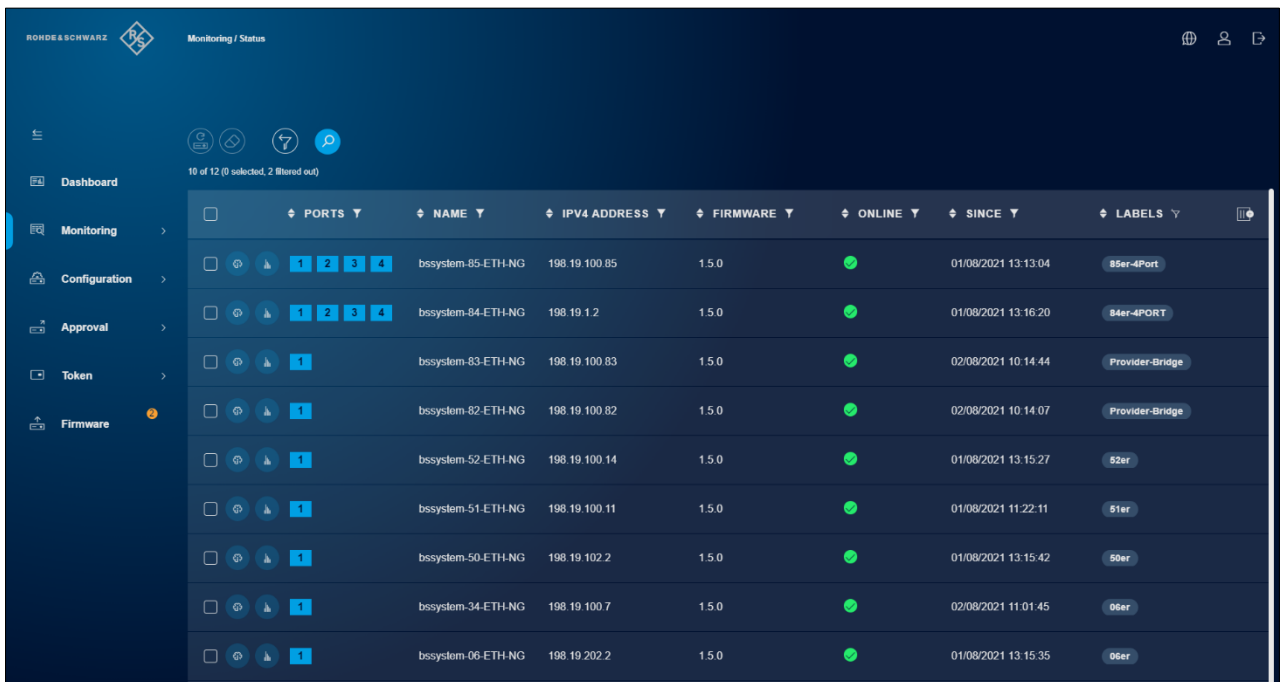
**ROHDE & SCHWARZ**

Make ideas real





A web-based client provides a comfortable use of the security management system and easy operation. Starting with a general status overview the application offers a step down into configuration and monitoring details.



An integrated REST-API opens a wide range to integrate the security solution into an existing network monitoring and surveillance system.

**Rohde & Schwarz Cybersecurity GmbH**  
 Muehldorfstrasse 15 | 81671 Munich, Germany  
 Info: +49 30 65884-222  
 Email: cybersecurity@rohde-schwarz.com  
 www.rohde-schwarz.com/cybersecurity

**Rohde & Schwarz GmbH & Co. KG**  
 www.rohde-schwarz.com



R&S® is a registered trademark of Rohde & Schwarz GmbH & Co. KG  
 Trade names are trademarks of the owners.  
 Subject to change  
 PD 3683.3807.22 | Version 01.00 | August 2021 (sch)  
 R&S®Trusted Objects Manager NE  
 © 2021 - 2021 Rohde & Schwarz Cybersecurity GmbH | 81671 Munich, Germany