

# R&S®HX002

## 1 kW HF Dipole

2 MHz to 30 MHz

With integrated antenna tuning unit for all distances

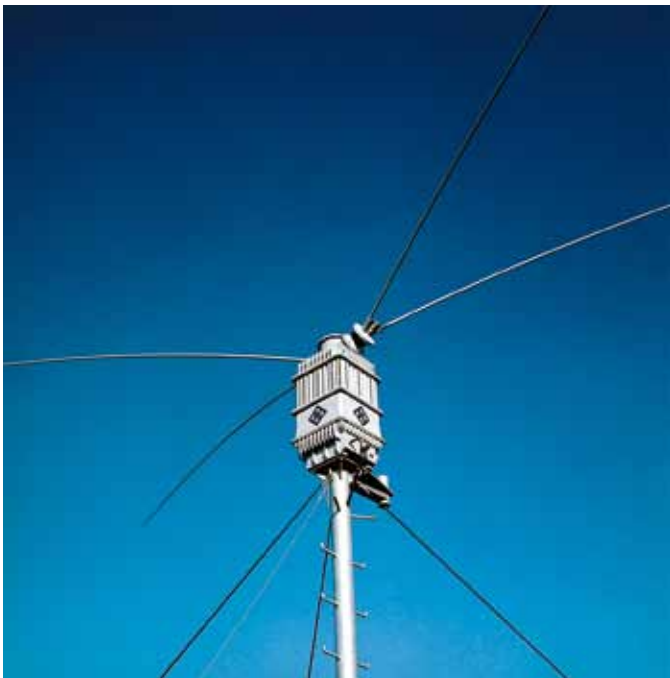


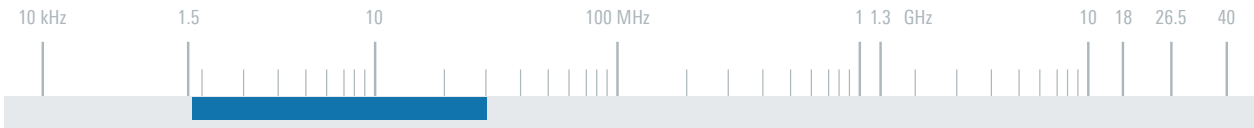
The R&S®HX002 1 kW HF dipole ensures optimum coverage of all distances and can be used for transmission and reception. The antenna can be directly connected to the R&S®XK2500 and R&S®XK2900 HF transceivers (power supply and control signals via transceiver control cable).

The fully automatic ATU integrated in the antenna takes into account the ambient conditions to ensure optimum matching to the transceiver. This allows antennas to be set up close to neighboring antenna systems and on difficult terrain (e.g. built-on roofs). The R&S®HX002F option extends the frequency range, reducing the lower frequency limit from 2 MHz to 1.6 MHz.

### Key facts

- Omnidirectional coverage with high-angle radiation (NVIS)
- No skip zone
- Automatic adaptive operation
- Silent tuning possible
- Setup close to neighboring antennas possible





Specifications	
Frequency range	2 MHz to 30 MHz
With frequency extension	1.6 MHz to 30 MHz
Polarization	linear/horizontal
Input impedance	50 Ω
VSWR	< 1.5 (typ. < 1.1)
Max. input power	1.15 kW CW/1.15 kW PEP
Tuning time	
Without retuning	70 ms to 500 ms
With retuning	typ. 2 s
Initial tuning	typ. < 15 s
Silent tuning	< 60 ms (typ. 56 ms)
Tuning power	50 W to 300 W
Gain (15 m above perfectly conducting ground)	-3 dBi to +8 dBi (typ.)

Power supply	21 V to 32 V DC (max. 6 A)
Average	28 V DC (2.5 A)
Power consumption	max. 165 VA
RF connector	N female
Control connector	26-contact, round, male
MTBF	> 6500 h
Operating temperature range	-30°C to +55°C
Max. wind speed	
Without ice deposit	188 km/h
With 30 mm radial ice deposit	130 km/h
Dimensions	
Length	approx. 10.3 m (405.5 in)
Width	approx. 3.6 m (141.7 in)
Height of ATU	approx. 1.10 m (43.3 in)
Weight	approx. 103 kg (227.1 lb)

Ordering information	Type	Order No.
1 kW HF Dipole (with ATU)	R&S®HX002	0682.3010.24
<b>Recommended extras</b>		
Frequency Range Extension, 1.6 MHz to 2 MHz	R&S®HX002F	4017.9053.02
Lattice Mast, length: 10 m	R&S®KM451B1	4028.3351.02
Lattice Mast, length: 15 m	R&S®KM451B2	4028.3400.02
Mast Adapter for 10 m or 15 m mast	R&S®KM451Z4	4032.2904.02

