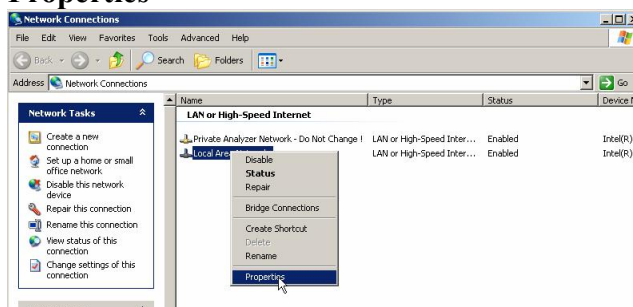
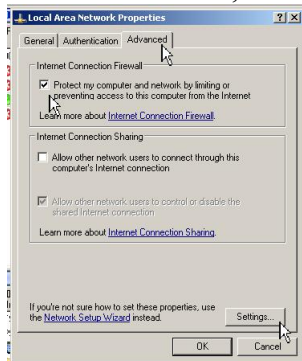


How to activate the R&S®DVM firewall

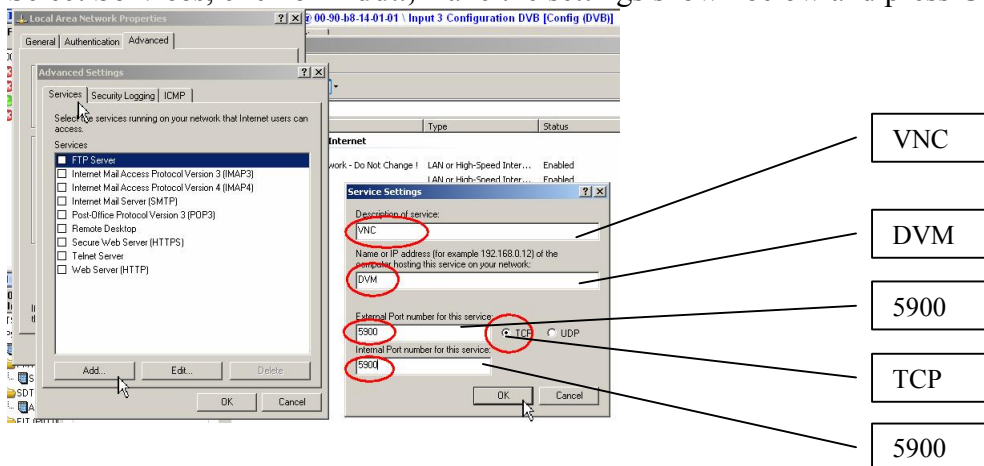
1. Disable the R&S®DVM write protection:
 - a. **Start → Programs → Rohde_Schwarz →DVM →Write Filter Disable**
 - b. Reboot the R&S®DVM
2. Enable and configure the firewall for **VNC, SNMP, FTP and Ping**:
 - a. **Start → Settings → Network Connections**
 - b. Click on **Local Area Network** with the right-hand mouse button and select **Properties**



- c. Select **Advanced**, enable **Protect my Computer...**, click on **Settings**



- d. Select **Services**, click on **Add...**, make the settings shown below and press **OK**



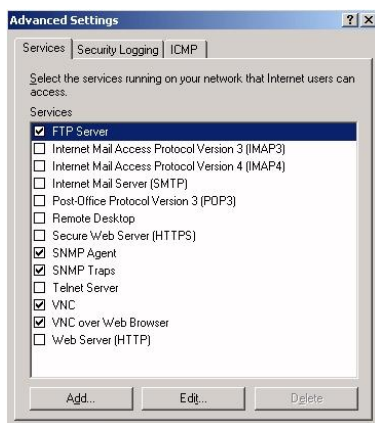
- e. Enable and configure the firewall for **SNMP** and **VNC over Web Browser**:

Description	Name or IP address	External Port	Internal Port	TCP	UDP
SNMP Agent	DVM	161	161		X
SNMP Traps	DVM	162	162		X
VNC over Web Browser	DVM	5800	5800	X	

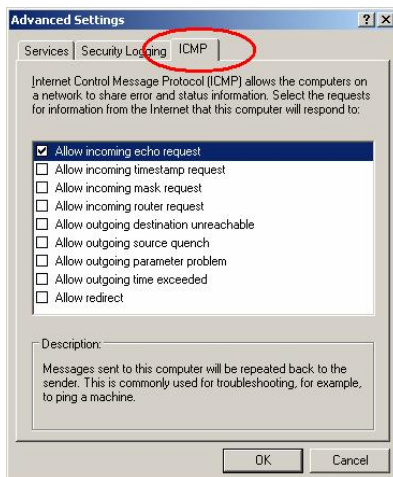
- f. Enable and configure the firewall for **FTP**:

Select the checkbox for FTP Server, click on **Edit** and change the entry in the "Name or IP address" field to **DVM**.

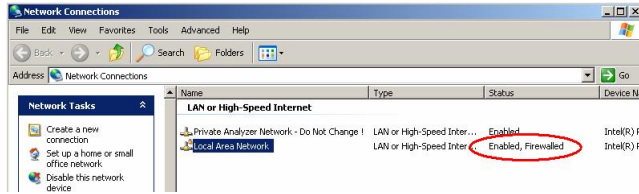
- g. Now the following window should be displayed:



- h. To enable the instrument to respond to a ping command, select ICMP and activate "Allow incoming echo request":

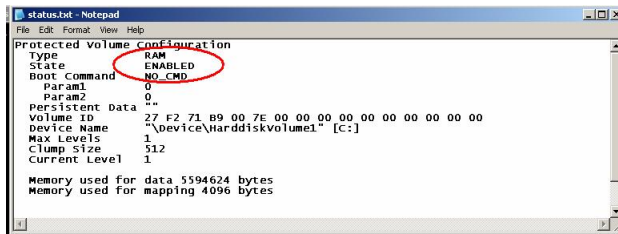


- i. Press OK two times to enable the Firewall for the **Local Area Network**.



3. Enable the R&S®DVM write protection:

- Start → Programs → Rohde_Schwarz → DVM → Write Filter Enable
- Reboot the R&S®DVM
- Check whether the protection is active:
Start → Programs → Rohde_Schwarz → DVM → Write Filter Status
State should be **ENABLED**.



Ready